



Te Tēnehi o Aotearoa

TENNIS NEW ZEALAND **ANNUAL REPORT** 2022/2023

BOARD MEMBERS

PRESIDENT

Terri-Ann Scorer

HONORARY VICE PRESIDENT

Jeff Simpson

FINANCE AND AUDIT COMMITTEE

David Searle (Chair), Robyn Kiddle, Terri-Ann Scorer

BOARD OF DIRECTORS

Terri-Ann Scorer (Board Chair)

Peter Maciaszek (Deputy Chair)

Chris Hall

David Searle

Fiona Stewart

Marina Erakovic

Phil Wright

Rewa Harriman - Co-Opted

Robyn Kiddle

LIFE MEMBERS

Miss K M Nunneley*, Mr M E Denniston*, Mr G N Goldie*, Mr J C Peacock*, Mr F H Woodward*, Mr W Goss*, Mr A G Henderson*, Mr, R Browning*, Mr G Gore*, Mr P Harrison*, Mr H M Boddington*, Mr J Mercer*, Mr S A Cleal*, Mr H S Wilkinson*, Mr F S Ramson*, Mr G C Reid*, Mr S Painter*, Mr D C Coombe*, Mr O Parun OBE, Mr C J Lewis, Mr J E Robson MBE*, Mr I D Wells OBE*, Mr B N Shute ONZM*, Mrs B Cordwell, Mr J Simpson, Mr P Wilson ONZ*, Mr B Steven, Mrs R Morrison MBE, Mr D Garratt NZOM

(*Deceased)

AUDITORS

BDO

OUR PARTNERS

Our sincere thanks to the funding and commercial partner for their continued support.

PRINCIPAL FUNDERS

Sport NZ • TAB

CORPORATE PARTNERS

Wilson • AON • Eves Real Estate • ASICS • AO Travel

Radix Nutrition • Jetts • Rebel Sport • Sky Sport

The Island • Plexipave

FUNDING PARTNERS

The Lion Foundation • NZCT • High Performance Sport NZ

Tect • Christchurch City Council • NZOC • Tauranga City

Council • Wellington City Council • Kiwi Gaming Foundation

Four Winds Foundation

STAFF

CHIEF EXECUTIVE

Julie Paterson

COMMERCIAL & MARKETING MANAGER

Gareth Archer

HIGH PERFORMANCE MANAGER

Emily Carter

NATIONAL PERFORMANCE COACH

Chris Bint

NATIONAL COACH

Matt Alexander

NATIONAL SPORT DEVELOPMENT MANAGER

Chris Mundell

IT SUPPORT

Chris Raynes

TOURNAMENT & EVENTS MANAGER

Mark Atkins

CLUB SUPPORT MANAGER

Ali Telford

COACH DEVELOPMENT MANAGER

Adam Roberts

PARTICIPATION PROGRAMMES MANAGER

Shannon Heweston

TECHNOLOGY PRODUCTS MANAGER

Liam Collins/James Blackwell

IT SYSTEMS & SUPPORT

Aaron Jefferson

HIGH PERFORMANCE ADMINISTRATOR

Tracy O'Connor

STRENGTH & CONDITIONING COACH

Celine Schneider

COMMUNICATIONS COORDINATOR

Amy March

OFFICE ADMINISTRATOR

Liesl Ploos van Amstel

KAITOHU AHUREA O TĒNEHI AOTEAROA

Adam Whauwhau

CONTENTS

4	FROM THE CHAIR AND CEO
8	ENABLE
16	WIN
20	SECURE
22	AFFILIATE REPORTS
28	TENNIS IN NZ AWARDS
30	RESULTS & RANKINGS
40	GOVERNANCE
42	FINANCIAL STATEMENTS

FROM THE CHAIR AND CEO

TENNIS NZ MISSION

Our mission at Tennis NZ remains to build community through tennis.

To achieve this, the organisation continues to work with and support the tennis community from grassroots to high-performance levels, fostering a sense of community and inclusivity by building strong networks and relationships.

The work we do supports the New Zealand vision of tennis being an accessible and thriving sport for all to enjoy.

So, it is with great pleasure that we present the 2022-2023 annual report which demonstrates the strides made towards our mission and vision, and how we continue to lay the foundations for an even brighter future.

A strong shared purpose, clear roles and responsibilities, quality experiences, and accessibility of the sport to all New Zealanders are what underpin our efforts.

STRATEGIC FRAMEWORK REFRESH

Over the past year, Tennis NZ transitioned to a new strategic framework which was finalised in June 2023 after a thorough review of the 2017-2022 framework and outcomes.

Feedback from the community resulted in a 'refresh and refine' approach to the 2023-2028 strategic framework. Several separate workstreams have been incorporated into the overarching strategic framework, including the Modernising Tennis Plan, Strengthen and Adapt, and the Women and Girls in Tennis Plan.

The initiatives being accelerated in this new period are:

- Delivery of the Professional Coach Register
- The Officials' Development Pathway
- Participant Protection and Police Vetting Policies
- The performance tournament structure for players

This year a detailed Statement of Performance is included in the annual report. It includes the measurable outcomes we have targeted and the results against each key performance indicator. The KPIs reflect the four (previously three) pou within the 2023-2028 strategic framework:

GROW

Support stakeholders to deliver quality and accessible experiences

CONNECT

New and diverse communities to tennis

WIN

On the international stage

ENABLE

The tennis community to support growth

We are excited to see the progress as the tennis community works collectively to deliver on the 2023-2028 strategic framework. This report is based on the three strategic pillars (pou) from the 2017-2022 strategic framework and you can read more about the transition to four pou in the Governance Report.

INCORPORATED SOCIETIES ACT

An important focus this year has been working with Sport NZ to understand the requirements of the Incorporated Societies Act, which was updated in October 2022, and the implications this will have on the constitutions of many tennis organisations.

Our ongoing work on IT platforms and policies sets tennis up well to handle the requirements of the Incorporated Societies Act, such as member management.

We have communicated to tennis clubs that there is no rush to update constitutions as templates will be provided following the ratification of a new Tennis NZ constitution.

The deadline for re-registration to the Act is in April 2026 and club templates will be available well in advance of this.



PARTICIPATION

More Kiwis are becoming members of our clubs, as seen by the 14% increase in membership this year (up to 41,238).

As the tennis community's use of IT platforms continues to evolve, the benefit of reduced administration time for busy volunteers is becoming clear. For example, the new club portal has significantly reduced the time spent on annual membership and participation reporting.

Promato, the custom-built system that served tennis so well was retired at the end of 2022 and now 159 clubs (up from 132 in 2022) are using ClubSpark to manage their membership.

Using online membership platforms is fast becoming a necessary tool to enable growth in tennis, supporting us to deliver strong and connected marketing campaigns focussed on increasing participation.

Love Tennis was again a fantastic and fun weekend with 159 clubs involved, attracting 3,700 registrations through the AO prize draw.

Tennis NZ launched an online and largely automated national police vetting service to support safe tennis for those who have regular contact with children and vulnerable adults. Alongside a new coach register these tools work hand in hand to help the tennis community understand who is qualified and police-vetted when working in our clubs and facilities.

HIGH PERFORMANCE

Congratulations to Erin Routliffe and her Canadian partner Gaby Dabrowski for winning the U.S. Open Women's Doubles – an absolutely amazing feat! Whilst the win is outside of this annual report period, Erin's achievement is very fresh in our minds and worth celebrating at every chance we can. Erin is only the second NZ female to win a grand slam title, following Judy Connor-Chaloner who won the Australian Open in 1979. We are all very proud of the work Erin has done over the past years and overjoyed to see her succeed at one of the greatest tennis tournaments.

This year, more NZ players gained ranking points than ever before. This is largely because of the reinstatement (following COVID) of the World Tennis Tour events held in Wellington and Papamoa in December 2022. There are now 26 NZ players who have professional ranking points (up 72% from 2021/2022). Well done to all the athletes!

Both the Davis Cup and Billie Jean King Cup teams fell to Group Two of their respective competitions. However, the Davis Cup home tie hosted in February in Christchurch was a fantastic event and our thanks go to Tennis Canterbury and to all the supporters who came along.



ASB CLASSIC

Planning for the 2023 tournament began prior to the NZ borders opening which led to Tennis NZ commissioning a feasibility study to assess the viability of the tournament's return.

The ASB Classic is the most important event on the summer calendar, and the study gave Tennis NZ and Tennis Auckland both financial and consumer sentiment confidence.

The wildcard play-offs garnered significant media and player interest resulting in access for two men and two women via singles main draw and qualification wild cards.

Further provision for local players was available in the doubles draw which resulted in the largest number of New Zealand players competing at the Classic in many years.

Despite adverse weather conditions, the event was a fantastic success with new Tournament Director Nicolas Lamperin contracting a top player field which supported stronger commercial revenue and ticket sales than ever before. The tournaments returned a profit for both Tennis Auckland and Tennis NZ.

BICULTURAL COMMITMENT

We have continued to build on our bicultural journey with support from our partner Aotearoa Māori Tennis. Members of the Tennis NZ Board and senior

management team have completed cultural capability development programmes and Tennis NZ staff are integrating more cultural practices and language into daily activity. Tennis NZ has formally appointed Adam Whauwhau, well known to the Waikato and Masters tennis communities, to the role of Cultural Advisor.

We have begun Phase One of the Sport NZ funded Tikanga Rua project through ongoing engagement with Aotearoa Māori Tennis.

FINANCIAL

While this has been a particularly challenging year to manage financially, Tennis NZ has continued to maintain a strong financial position, allowing us to invest in programmes and initiatives that promote tennis at all levels.

Budgets were set prior to NZ borders fully opening and a lot of unknowns remained. Inflation has had a negative impact, particularly on the costs of team travel and accommodation.

TAB monthly revenue has not returned to pre-COVID levels, however, after TAB signed a contract with offshore betting entity Entain, an annual grant payment to National Sporting Organisations has been agreed for the next three years. The first year of this grant is reflected in the 2022-2023 revenue.

Other sponsorship streams have increased as has revenue from offshore betting agencies. A detailed financial report can be found on page 42 .



REMEMBRANCE, CELEBRATION, AND THANKS

In January, many Auckland and Northern Region clubs were heavily impacted by the Auckland Anniversary Weekend floods with seven clubs needing court and/or clubhouse replacement. Browns Bay in particular had to replace all of their tennis and squash courts.

Just ten days later Cyclone Gabrielle hit the North Island. This time the greatest impact was felt through the Tennis Eastern Region where the damage to some clubs, and the total loss of one occurred alongside the devastation in the community. Our thoughts are with everyone impacted and those who continue to be impacted by these significant events.

We were very sad to hear of the passing of Peter Wilson ONZM. Peter dedicated a significant amount of his life to tennis, contributing meaningfully towards the administration and development of the sport. He was a hugely respected Life Member of Tennis NZ, Tennis Auckland, and the Parnell Tennis Club and will be greatly missed by all.

Former Tennis NZ Chair and President Celia Patrick ONZM was awarded the Sport NZ Lifetime Achievement Award in July, and we were delighted to celebrate this important and well-deserved recognition with her.

Our considerable gratitude goes to the Tennis NZ Board members. This year we welcomed Robyn Kiddle (Hawke's Bay), Chris Hall (Wellington), and Phil Wright (Christchurch) and farewelled John Penny, Lesley Ferkins, and Lindsay Mouat. John, Lesley, and Lindsay all gave a considerable level of commitment and personal time to the board and its committees. Lesley remains on the board's Tikanga Rua committee.

A big thank you to the staff at Tennis NZ who continue to give their all, especially when under pressure over the busy summer of tennis. We farewelled Christophe Lambert and Jenny Fitzmaurice, two of the senior management team and wished them both well on their new paths. We also said goodbye to Liam Collins who very ably led the roll-out of ClubSpark.

Congratulations to team members Emily Carter, Shannon Hewetson, and Celine Schneider who all secured promotions within their departments, and a big welcome to new team members Chris Mundell, Chris Bint, and Mark Atkins.

As always, and most importantly, we offer our emphatic thanks to everyone who volunteers, plays, coaches, administers, and supports Tennis NZ. You have all contributed to our success and your dedication to tennis in New Zealand is invaluable.

Together we make tennis an accessible and thriving sport, built on the foundations of a strong community.

JULIE PATERSON
Tennis NZ CEO

TERRI-ANN SCORER
Tennis NZ Board Chair





ENABLE

KIA EKE

INTRODUCTION

It's been another challenging year for the wider tennis community. In January many Auckland and Northern Region clubs were heavily impacted by the Auckland Anniversary Weekend floods with seven clubs needing court and/or clubhouse replacement.

Just ten days later Cyclone Gabrielle hit the North Island. This time the greatest impact was felt through the Tennis Eastern Region where the damage to some clubs, and the total loss of one occurred alongside the devastation in the community.

At the halfway mark of 2023 parts of Northland, Auckland, Waikato, Bay of Plenty and Eastern Regions had recorded over a year's worth of rainfall – heavily diminishing the ability of clubs, coaches, and community organisations to deliver tennis.

We all need to continue to prepare for the increase in weather-related events and work to mitigate and minimise impacts. Raising awareness of and preparing clubs for the increasing costs associated with insurance and potential rebuilding will be a key focus for the Tennis NZ team.

On a more positive note, it has been wonderful to see a bounce back in the participation numbers of tamariki and rangatahi in this year's membership and casual categories. Young players are so influential in the growth and future development of tennis.

Despite the bad weather, a COVID-free year has meant that tennis clubs and facilities have been able to deliver programmes unrestricted by regulations, resulting in a 17% increase in participation of tamariki and rangatahi nationally. A 16% increase in female participation across these two key areas is equally as pleasing.

Tennis NZ works mindfully to gather insights from young people and young females with the ongoing evolution of our National Youth Advisory Group. Meeting regularly throughout the year, this group aims to engage more young people as volunteers in their local tennis communities. Group members also provide guidance and understanding on nationally led strategies which supports Tennis NZ, Regions, and Associations to better connect with and understand young people.

CLUB MEMBERSHIP

The team at Tennis NZ would like to acknowledge the great mahi done by Regions, Associations, Clubs, Coaches, and Volunteers across the motu. A huge thank you for your efforts this year.

Your work has resulted in a 14% increase in club membership numbers (up to 41,238).

This is a significant achievement, and a testament to the ongoing efforts of the deliverers and administrators who ensure their clubs and facilities are offering quality and accessible tennis opportunities to all New Zealanders.

Clubs in the Northern and Central Regions had membership increases of 22% and 8% respectively.

A special mention goes to clubs in the Auckland Region as a new affiliation model opened the door to a huge 60% increase in membership (up by 4,882).

Membership still plays a vital role in the health and wellbeing of tennis clubs, and the work club committees and coaches do to ensure their offerings align with their community's needs is vital.

National participation drives like Love Tennis continue to be a fantastic way to get new people into tennis, and helping clubs make effective plans to retain these people beyond year one has been a significant focus for Tennis NZ's Club Support team this year.

CLUB MEMBERS

REGIONS	Senior (35+)		Adult (19-34)		Junior		12U		TOTAL MEMBERS
	Male	Female	Male	Female	Male	Female	Male	Female	
NORTHERN	1,859	1,671	299	188	728	579	1,016	710	7,050
AUCKLAND	3,698	3,113	1,004	771	1,293	935	1,226	964	13,004
WAIKATO-BAYS	1,844	1,466	236	142	536	456	944	718	6,342
CENTRAL	1,758	1,481	373	211	780	604	1,071	735	7,013
CANTERBURY	1,461	1,240	226	160	596	484	1,075	894	6,136
SOUTHERN	394	360	118	117	235	160	262	140	1,786
TOTAL 22/23	11,014	9,331	2,256	1,589	4,168	3,218	5,594	4,161	41,331
TOTAL 21/22	10,081	8,293	1,461	904	4,109	3,052	4,702	3,522	37,079

CASUAL PLAYERS

REGIONS	21/22	22/23
NORTHERN	2,760	2,201
AUCKLAND	12,124	9,455
WAIKATO-BAYS	6,881	6,610
CENTRAL	2,697	2,560
CANTERBURY	2,357	2,079
SOUTHERN	922	1,255
TOTAL	27,741	24,160

GRAND TOTAL	21/22	22/23
	119,727	108,610

NATIONAL PROGRAMMES

PROGRAMME	21/22	22/23
TENNIS HOT SHOTS		
SCHOOLS	29,683	17,726
COACHING	17,422	14,951
COMMUNITY PLAY	4,021	4,747
COMPETITIONS	1,277	1,379
CARDIO TENNIS	1,683	1,304
TENNIS XPRESS	1,821	3,012
TOTAL	55,907	43,119

CASUAL PARTICIPATION

While an increasing proportion of tennis participation falls into the casual category, this year saw a slight decrease in reported numbers.

Clubs are embracing Book a Court for online bookings and payment, generating an increase in local revenue as well as the ability to add new contacts to their club database.

Many clubs are using Tennis Xpress and Cardio Tennis to appeal to casual players, providing people with opportunities to participate and learn in a way that feels accessible to them.

It's important to track casual court usage effectively and accurately and to communicate easily with casual players so they feel part of the tennis family. ClubSpark and Book a Court make this extremely easy to do.

NATIONAL PROGRAMMES

A heartfelt thank you to everyone who supports the delivery and development of Cardio Tennis, Tennis Hot Shots, and Tennis Xpress. These national programmes are world-class and sit head and shoulders above many of the programmes available in other sports in NZ.

The star of 2022-2023 was Tennis Xpress. Participation in this adult beginner programme has increased by 60%!

Participation in Hot Shots Community Play, an introductory/financially accessible branch of Tennis Hot Shots rose by 18%.



Increases in these particular programmes demonstrate the appetite for people wanting to try tennis, and clubs and facilities offering these programmes are well placed to attract new and beginner players to their courts.

School participation in Tennis Hot Shots reduced by 30% this year. It's a significant drop, largely due to schools' lack of appetite for managing external providers and activities post-COVID.

Tennis NZ's close relationship with Tennis Australia makes it easier to evolve national programmes to ensure they remain of high quality, both from a provider and participant perspective. Over the past year, the two organisations have worked closely together, and with the tennis communities in both countries to review Tennis Hot Shots and Cardio Tennis. We are excited to announce the launch of the refreshed programmes in October 2023 which will see a whole new generation of players experience a fantastic learning environment.

Each year, the number of venues signed up to deliver Hot Shots, Cardio Tennis, and Tennis Xpress fluctuates. This is often influenced by volunteers and coaches leaving or joining clubs. In 2022-2023 215 venues were signed up to national programmes, slightly down on the previous year.

This year the Tennis NZ team chose to reinstate the National Programmes Manager role, giving us the capability and capacity to ramp up our support to these programmes in conjunction with the Coach Development and Club Support departments.



2023-2028 STRATEGIC REFRESH

An overview of the review and refresh of the 2017-2022 Tennis in New Zealand Strategic Framework is included in the CEO and Chair Report.

As we enter the 2023-2028 strategic period, the team responsible for the bulk of initiatives within the Enable and Grow pou will continue to support key initiatives from the previous framework as well as introduce some new projects to meet the demands of the community.

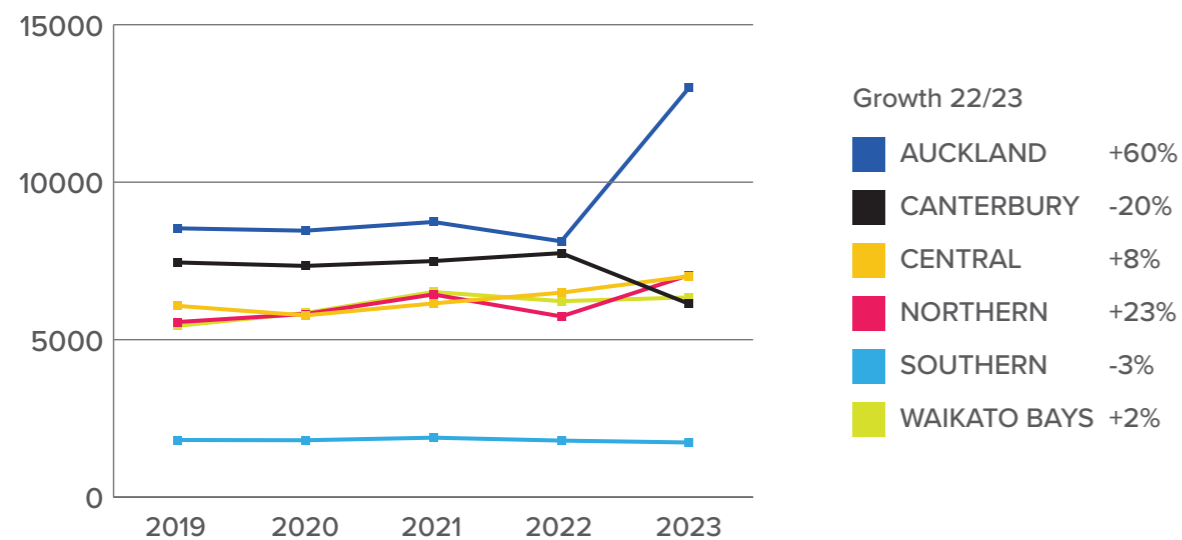


STRATEGIC FRAMEWORK KEY AREAS

- Grow participation through targeted support to develop and deliver youth-based initiatives.
- Grow the number of quality coaches by increasing connection and development opportunities across the coaching network.
- Grow the number of coaches on the coach registration database.
- Provide training and build the confidence of national database users so they can use the platform effectively for communication, participation growth, and retention.
- As part of Tennis NZ's bicultural commitment, partner with Aotearoa Māori Tennis to grow Māori engagement in tennis.
- Embed the Tennis Participant Protection Policy in the community and ensure 100% of relevant people are police vetted at affiliated tennis clubs.
- Make tennis a recognised and trusted 'brand' to help attract people who are new to tennis, as well as those who are considering returning to tennis.



NATIONAL FIVE YEAR GROWTH TREND CLUB MEMBERSHIP BY REGION



CLUB SUPPORT

Supporting tennis clubs to provide quality and accessible experiences to their community is a key focus for Tennis NZ.

Products like ClubSpark and Love Tennis, programmes like Hot Shots, Cardio Tennis, and Tennis Xpress, and initiatives like the coach register all contribute towards the goal of tennis being quality and accessible.

Making and keeping tennis safe is critical to the whole tennis community, and this year Tennis NZ introduced two new initiatives as part of our Safe Tennis commitment.

The National Police Vetting Service was a milestone achievement, incorporating technology, automation, NZ Police, and improvements on existing Tennis NZ policies.

The Coach Register which is launching fully in the second half of 2023 will help participants and club/facilities managers to make suitable coach-related decisions.

CLUB SUPPORT HIGHLIGHTS

- Held three national coach-club hui's (Tāmaki Makaurau, Ōtautahi, Te Whanganui-a-Tara).
- Continued to develop and add to the online Club Toolkit – full of resources and information to support best practice club operations.
- Grew the Club Matters Facebook group from 458 to 604 members.
- Set up a Club President's WhatsApp group for easy 'hive mind' communication.
- Met regularly with our newly established National Youth Advisory Group.
- Delivered nine online webinars (310 total attendees) covering a range of topics including:
 - Social Media
 - Growing Club Revenue
 - Funding
 - Casual Players to Increase Participation
- Led a club pilot to explore setting up a joint administration role between multiple clubs. Four clubs were part of this and the pilot provided important feedback about the scalability of the idea.
- Connected regularly with the National Participation Team (staff and volunteers from Regions and Associations).





CLUBSPARK AND BOOK A COURT

More clubs are using ClubSpark every year. This cloud platform offers a range of club management tools and is an example of technology that reduces admin workload of volunteers and administrators.

At the time of writing (September 2023), more than 230 New Zealand tennis clubs use ClubSpark – this is approximately 53% of affiliated clubs and 67% of the total number of clubs that have 30 or more members.

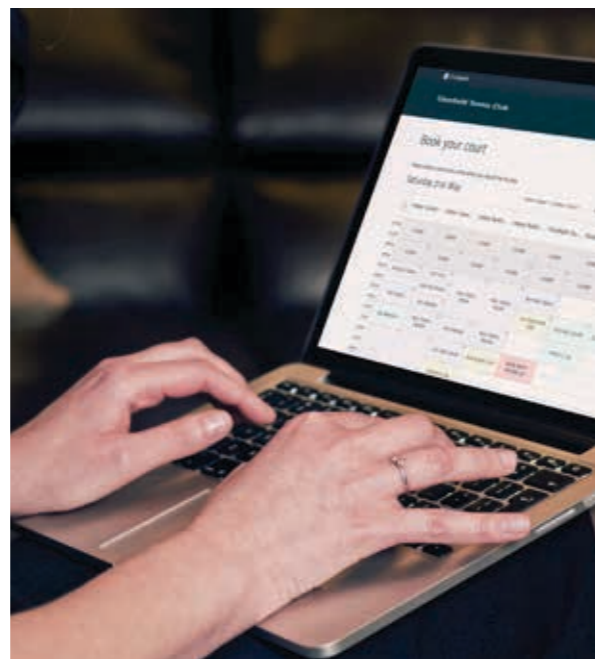
ClubSpark's predecessor, Promato, was retired in late 2022 and Tennis NZ now uses a Microsoft Dynamics platform to manage the national database, integrating it with ClubSpark. The Dynamics database includes a Club Portal which makes it easy for clubs to submit annual membership and participation data, see the SAFE status of coaches and volunteers, update club information, and dive into their club's membership insights and trends.

Casual court hire through Book a Court is now available at over 40 venues. In the last 12 months, over 5,000 bookings were made, generating more than \$60,000 of casual booking revenue for clubs and venues.

A cost-effective smart padlock is now available, meaning for an outlay of only ~\$200, clubs can install an entry-level accessible Book a Court option to generate

revenue through casual court hire. This padlock has been successful in Australia and we expect it to help rapidly grow the number of clubs offering casual bookings in New Zealand.

All the technology that Tennis NZ invests in is designed to help clubs deliver quality and accessible tennis opportunities.



COACH DEVELOPMENT

Coaches play one of the most important roles within the tennis community.

For this reason, the ongoing recruitment, retention, development, and promotion of tennis coaches remains a core priority for the team at Tennis NZ.

Of late, there have been several governmental and international factors that have greatly impacted the ability of clubs and coaching businesses to attract coaches both locally and internationally.

A large amount of work was done this year, to prepare for the launch of the national coach register in July 2023. This register enables the tennis community to search for internationally recognised, qualified and police-vetted tennis coaches. It will provide a clear standard of recognition that supports Tennis NZ's coach education pathway and commitment to SAFE Tennis.

Overall, we are very pleased to have maintained our annual average number of coaching course attendees this year.

An important part of the coaching pathway is the Coaching Assistant Course. This entry-level course is designed as a step into coaching, and building the confidence of young people, parents, volunteers, and others who want to help on court. This year, we launched an accessible version of the CAC for attendees in remote regions, reducing travel time and moving parts of the course online. 20 attendees joined

the accessible CAC, contributing to the total of 133 newly trained Assistant Coaches.

Three Junior Development Coach courses were held this year. This is the first level of three coaching qualifications available in NZ. 70% of the Auckland course attendees were female and across all three courses, 62% of attendees were under 25 years old – highlighting the positive impact of our strategic goals to support the female coaches' network and develop younger coaches. 30 attendees took a JDC this year.

Alongside multiple development and education opportunities for coaches, this year Tennis NZ delivered the newest model of Tennis Australia's Club Professional Coach course. The Club Professional Course is the second level of three coaching qualifications available in NZ.

More coaches signed up for the course than any previous Club Professional course offered in NZ and we are grateful for the opportunity to support the thirteen coaches who, over a period of 12 months, will work towards meeting 100% competency across 21 assessment tasks.

Finally, this year we launched the Performance Coach Support Network. Tennis NZ's High Performance and Coach Development teams have collaborated to connect coaches working in the performance space. The Network is designed to create a community of practice and provide continued professional development opportunities for these coaches at major junior tennis events throughout the year.



WIN KIA TOA



BILLIE JEAN KING CUP

NZ didn't play any Billie Jean King Cup matches in the 2022-2023 financial year, but we would like to mention the most recent competition for the team, held in Kuala Lumpur, Malaysia, in late July 2023.

The NZ team of Erin Routliffe, Valentina Ivanov, Vivian Yang, Jade Otway and Monique Barry, captained by Matt Hair narrowly missed out on promotion back into Asia/Oceania Group I. The team qualified top of their pool of six teams, to meet number one seeds Chinese Taipei in the final playoff match. With the tie sitting at 1-1 after the singles, the team was unlucky to miss out in a tightly contested doubles match.

DAVIS CUP

This year saw Davis Cup home ties return to New Zealand after the last two fixtures were held in the U.S. due to COVID border restrictions.

In February 2023, the team lost their Davis Cup World Group 1 play-off tie 3-1, versus Bulgaria at Wilding Park in Christchurch.

The World Group 2 tie was set for September, which, at the time of writing has been played recently. The team of Ruben Statham, Ajeet Rai, Isaac Becroft, Finn Reynolds and Artem Sitak were able to regain a position into the World Group 1 play-offs after a 3-1 win over Thailand at the ILT Stadium Southland in Invercargill. The next Davis Cup tie will be held in February 2024.

JUNIOR PLAYERS

VIVIAN YANG

Vivian won her first professional doubles title at the ITF W15 in Caloundra, Australia in July 2022. She teamed up with fellow Kiwi Monique Barry. In October 2022 she won another doubles title at the ITF W15 Sharm El-Sheikh, followed by her first singles title in December 2022 at the ITF W15 Wellington. Vivian also qualified and won her first-round singles at the 2023 Junior Australian Open reaching her junior career high of #77.

JACK LOUITIT

Jack reached a junior career high of #43 and then went on to achieve his first professional ranking in Sharm El-Sheikh in October 2022. He won his first professional men's doubles title at the ITF M15 Tauranga event in December 2022.

DIEGO QUISPE-KIM

This year, his last playing juniors, Diego reached a junior career high of #70 and secured seven titles in 2022. Two doubles titles – at the J4 Lautoka/July, and the J2 Sydney/August, and five singles titles – two at the J4 Lautoka, the J5 Auckland/September, the J3 Auckland/October, and the J3 Christchurch/October. Diego also played in qualifying at the Junior Australian Open 2023.

HARRY PUGH

Harry won the J30 singles and doubles title in Darwin, in addition to four doubles titles in NZ at the J60s in Auckland and Wellington and the J100s in Christchurch and Auckland.

NEW ATP/WTA RANKED PLAYERS

In the last 12 months, 14 players have acquired their first professional ATP or WTA ranking (singles and/or doubles);

Rob Reynolds, James Watt, Reece Falck, George Stoupe, Corban Crowther, Anton Shepp, Elyse Tse, Ruby Young, Kyna Decruy, Jack Loutit, Vivian Yang and Caelan Potts.

Eight of these players gained their rankings at the New Zealand ITF Pro Tour events in December 2022.

This is an increase in the total number of ranked players from 9 to 16 ATP ranked players and from 6 to 10 WTA ranked players. An increase of 73%.



PRO PLAYER RESULTS

ERIN ROUTLIFFE

The biggest achievement of Erin's professional career happened outside of the 2022-2023 financial year but is worth a very special mention.

After a difficult start to the year, changing partners a couple of times, Erin has become the first NZ female player to win a Grand Slam title in 44 years, taking out the US Open women's doubles title after playing only four tournaments together. Erin also achieved a new career high of #20 and picked up another title at the WTA 250 in Austin, Texas.

MICHAEL VENUS

Another solid year for Michael Venus taking out three ATP 250 titles at Geneva, Banja Luka and Dallas with current partner Jamie Murray, in addition to making the finals of the ATP 250 finals in Adelaide and in Kitzbuhel with previous partner Tim Puetz (GER).

MONIQUE BARRY

Monique has reached a career-high in singles (#594) and doubles (#494) after a good year on tour. Along the way, she achieved two doubles titles – two at the ITF W15 in Caloundra, Australia (one with fellow Kiwi Vivian Yang).

KIRANPAL PANNU

KP won the M15 in Papamoa in December 2022.

FINN REYNOLDS

Finn made a good start to his first full professional year starting with two doubles titles and a final in October 2022 at the ITF M15 in Sharm El-Sheikh, followed by three more ITF M15 doubles titles – Memphis in August 2022, Wellington in December 2022, Tacarigua in April 2023 and the final of the ITF M25 in Thailand in June 2023.

AJEET RAI

Ajeet won the ITF M15 singles title in Wellington in December 2022, and his first round of qualifying at the ASB Classic ATP 250 beating a top 100 player. In November 2022 he made the final of the ITF Sydney Challenger 80 and won both the Thailand ITF Nonthaburi Challenger 50 in September 2022, and the ITF M15 Changwon, South Korea in August 2022.

RUBIN STATHAM

In January 2023, Ruben won the doubles title at the Noumea Challenger 100 in New Caledonia. Then in April, he made two doubles finals in Mexico - the ITF Morelos Challenger 75 and the San Luis Potosi Challenger 75. This was followed by another final at the Busan Challenger 125 in May 2023. At the end of the year, Ruben's doubles ranking returned to #168.

ISAAC BECROFT

Slightly outside of this year's reporting period as the win happened in late July 2023, but we'd like to make a special mention of congratulations to Isaac who won his first professional doubles title at the M15 in Caloundra.

INJURIES

Paige Hourigan, Marcus Daniell and Valentina Ivanov spent this year focusing on the rehabilitation of their knee injuries.





INTERNATIONAL JUNIOR TEAM EVENTS

WORLD JUNIOR TEAMS (14U), MALAYSIA

20 – 26 March 2023

Girls Team: Yashwitha Reddy, Una Mistic, Dallas King-Ehau

Captain: Chris Bint (Auckland)

Result: 10th

27 – 2 April 2023

Boys Team: Zac Wu, Liam Youn, Riley Breen

Captain: Dave Knight (Central)

Result: 12th

JUNIOR BILLIE JEAN KING CUP, SHYMKENT, KAZAKHSTAN

1 – 7 May 2023

Team: Aishi Das, Lucia Gale, Amber Dano

Captain: Emily Fanning (Canterbury)

Result: 10th

JUNIOR DAVIS CUP, SHYMKENT, KAZAKHSTAN

8 – 13 May 2023

Team: Kai Millburn, Finn Willman, Archie Stewart

Captain: Mark Millburn (Southern)

Result: 10th

AUSTRALIAN TEAMS EVENT, GOLD COAST

June 2023

11U Girls Team: Rosalie Pollyn, Lily Fannin, Charlize Cashmore

Captain: Dwayne Cleugh (Auckland)

Results: 2nd

11U Boys Team: Levi Wu, Luke Barrett, Sam James

Captain: Nic Jenkins (Canterbury)

Result: 7th

13U Girls Team: Yashwitha Reddy, Una Mistic, Dorea Morina

Captain: Chris Bint (Auckland)

Result: 3rd

13U Boys Team: Zach Wu, Liam Youn, Joshua Gilbert

Captain: Rynold Timothy (Bay of Plenty)

Result: 5th

15U Girls Team: Lucia Gale, Nishitha Maarka, Ayla Giesen

Captain: James Meredith (Canterbury)

Result: 8th

15U Boys Team: Jack Hansen-Ratter, Dan Millburn, Archie Stewart

Captain: Jack Tiller (Canterbury)

Result: 6th

TOURS

AUGUST 2022 – Sydney B2 and J2 for 16 players

AUGUST/SEPTEMBER 2022 – US Open and Canada for Jack Loutit

SEPTEMBER/OCTOBER 2022– NZ ITFs in Auckland and Christchurch

OCTOBER/NOVEMBER 2022 – Egypt for 5 weeks for Finn Reynolds, Jack Loutit, Corban Crowther and Vivian Yang

NOVEMBER 2022 – Traralgon M25 and W25's Pro events for Vivian Yang, Jack Loutit and Ajeet Rai

DECEMBER 2022 – NZ Pro tours in Wellington and Papamoa for all participating players.

JANUARY 2023 – Traralgon and Junior Australian Open for Diego Quispe-Kim and Vivian Yang

FEBRUARY/MARCH 2023 –15k Pro events for Aishi Das and Vivian Yang J00 and J300's. J200 and J300's in Sarawak and Thailand for Harry Pugh, Renee Zhang, Vivian Yang, Aishi Das, Duncan McCall and Maria Galatescu.

APRIL 2023– Korea Challenger events for Ajeet Rai

MAY/JUNE 2023 – Thailand and Tianjin Pro Events for Vivian Yang, Isaac Becroft, Finn Reynolds, Shona Nakano, Elyse Tse and Monique Barry.

TRAINING CENTRES

New Zealand's three largest cities are now fully operating regional programmes for junior players 14 years and younger.

The programme in Wellington is run by Dave Knight, Christchurch's programme is run by Stu Chalmers, and Auckland's programme is run by James Greenhalgh.

NATIONAL PROGRAMME

In between and during overseas tours, NZ athletes are supported on and off the court by Tennis NZ's national coaching team - Development Coach Matt Alexander, and Strength and Conditioning Coach Celine Schneider.

SECURE

KIA PŪMAU TONU

AN EFFICIENT AND EFFECTIVE TENNIS DELIVERY SYSTEM THAT DELIVERS GROWTH IN OUR SPORT

KEY HIGHLIGHTS

- Work continued on strengthening best-practice models within our tennis system
- Working groups were established to explore models for participant alignment and youth voice within tennis.
- Frameworks for Participant Protection within our sport were formalised.



TENNIS IS SUCCESSFUL IN SECURING REVENUE FROM A RANGE OF DIFFERENT SOURCES

- >> 8 New commercial partnerships
- >> 11 New revenue agreements

KEY HIGHLIGHTS

- A range of new revenue streams were created through innovative new event partnerships and securing agreements with offshore wagering partners to provide revenue into our sport.
- Our successful World Tennis Tour events in December distributed US\$70,000 in prize money and were close to cost neutral due to the strength of revenue partnerships created, as well as providing valuable opportunities for Kiwi's to earn ATP and WTA ranking points at home.

TENNIS HAS A YEAR-ROUND VISIBLE PROFILE IN NEW ZEALAND

- >> 90,188 ASB Classic Attendees
- >> 13.9 Mil Cumulative ASB Classic broadcast reach
- >> 7 International Pro Events Held in NZ

KEY HIGHLIGHTS

- The return of the ASB Classic was an undisputed highlight of the year. An incredible amount of hard work and determination saw the event come back after a two-year absence due to COVID and triumph despite one of the wettest summers on record in Auckland.
- Two new ITF World Tennis Tour events in Tauranga and Wellington were added to the calendar in December and in February Davis Cup returned to Christchurch, creating one of the biggest summer's of tennis yet in New Zealand.



ALL DELIVERY POINTS IN OUR SPORT ARE STRIVING FOR ORGANIZATIONAL EXCELLENCE

KEY HIGHLIGHTS

The continued strengthening of our rangapu/ partnership with Aotearoa Māori Tennis Association has provided guiding principles for engaging with Te Ao Māori. Mana Whenua Kai Tahu in Ōtautahi/Christchurch and Ngā Pōtiki in Pāpāmoa supported poignant Pōwhiri for visiting guests to Aotearoa. The gifting of a Taonga Whakairo to the International Tennis Hall of Fame provided a formal thanks for their support to the NZ Davis Cup Team during COVID-19.

TENNIS HAS MODERN AND INTEGRATED DIGITAL PLATFORMS THAT MAKE IT EASY TO TAKE PART IN AND EASY TO DELIVER

- >> 240 Clubs with ClubSpark accounts
- >> 39 Book A Court venues

KEY HIGHLIGHTS

- Our national database became operational, with club and association portals providing access for key statistics, emailing and annual returns
- The launch of the SAFE register provided an automated system to apply for police vetting as part of our Tennis Participant Protection Policy.



EXCELLENT RELATIONSHIP WITH KEY PARTNERS INCLUDING ITF, OCEANIA, GOVERNMENT, TLA'S, TERTIARY, GRAND SLAM NATIONS, SPORT NZ

- >> 5 New Zealanders on ITF Committees

KEY HIGHLIGHTS

- Our relationships with key governing bodies continued to strengthen, with representatives on key committees and attending landmark meetings.
- Our relationship with the WTA, ATP and ITF was strengthened through the return of professional tennis to New Zealand after COVID-19.
- We enjoyed a successful first year delivering on objectives for Sport New Zealand's Strengthen and Adapt programme.

AFFILIATE REPORTS

TENNIS NEW ZEALAND MASTERS

Our year started with the Pascoes TNZM National Championships hosted by Tennis Canterbury Masters in Christchurch. Excellent facilities were provided at Wilding Park and the Spreydon and Shirley Tennis Clubs. We extend a huge vote of thanks to all the volunteers who helped make this event such a success. Among many highlights, the achievement of the Meredith family stands out: Dave won gold in the MS 75+, while sons Matt MS 40+, Tim MS 35+ & James MS 30+ won these age groups respectively.

At Easter our Pascoes TNZM National Teams Event was hosted by Waikato. Courts at the Waikato Tennis Centre, Cambridge Racquets Club and Hamilton Squash & Tennis Club were venues for some great contests. Again we extend a big thank you to the volunteers who gave up their time to run this event. The winner of the John Mickell Trophy for the Champion Club at this event was North Harbour.

The prize-giving gave us an opportunity to present our TNZM Annual Awards. Congratulations to:

Sue Jamieson (WBOP) – Trevor Withers Trophy for Tennis Achievement

Raewyn Heywood (Northland) – Beverley Evans Trophy for Services to Tennis

WBOP – Beverley & Murray Billington Trophy for Club of the Year



Our 2022-23 year has seen several changes. Dawn Morrison, our wonderful National Administrator for the last eight years, was farewelled and Lyndsay Dick stepped up to fill the big shoes that Dawn has left. Thank you Dawn for your huge contribution you have made to our tennis family. Other sad farewells go to Sylvia Wilmshurst, our hard working Vice President and to Patron, Tup Cox.

The journey from Veterans to Seniors to Masters hits a milestone in 2024 with the 50th anniversary of the first National Tournament which was held at Mitchell Park, Lower Hutt in February 1974.

Our Golden Jubilee provides an opportunity to thank all the volunteers, administrators, sponsors and players who over the years have contributed to building the great organisation we have today.

JOHN DUNBIER
Tennis NZ Masters President

AOTEAROA MĀORI TENNIS ASSOCIATION INC.

Te Manatōpū Tēnehi Māori o Aotearoa

E ngā lwi, e ngā reo, e ngā karangatanga maha o ngā hau e whā, tēnei te mihi atu ki a koutou katoa

Tuatahi, he maimai aroha ki ngā poutokomanawa o te tēnehi Māori kua ngaro te pō uriuri ki te pō tangotango, ki te pō i oti atu. Okioki atu/.

Basil Corbett (Te Arawa) Bob Peni (Ngāti Raukawa) Taini Jamison OBE (Ngāti Maru, Ngāi Tahu) - Sadly, we acknowledge the passing of these three greats of Māori Tennis.

POINTS OF INTEREST:

- AMTA 96th Tournament at Waikato 2022, started with the powhiri at Tūrangawaewae Marae, where Dinny Mohi (Te Arawa, Ngāti Maniapoto) was honoured with Life Membership from Kiingi Tuheitia and Atawhai Paki.
- Jacques Rupe captured his first Māori Singles title (12U) and Leona Kaye-Ivitu won her 39th Māori title.



- For the first time live streaming of the tournament was broadcast by Local Gecko Productions – this allowed for our whanau from around the motu to watch and listen to commentary of selected games.
- Tennis NZ has developed the Strengthen and Adapt Project – Tikanga Rua, with AMTA
- A Cultural Advisor role (Adam Whauwhau) with NZ tennis has been established to ensure guidance around Tikanga, Kawa and Regional practices.
- Eves Open ITF World Tennis Tour, Pāpāmoa Tennis Domain – December 2022
- AMTA organised Ngā Pōtiki ā Tamapahore to facilitate the mihi-whakatau for the 26 Countries involved. Desrae Garratt was the official referee for the tournament.



- Tennis NZ Awards, Pāpāmoa -opened by AMTA Cultural Advisor Adam Whauwhau (Ngāti Haua) where Māori tennis players, Jane Wylie (Ngāti Kahungunu) – master's player of the year - Monique Barry (Te Atiawa) NZ singles female player of the year, Richard (Dick) Garratt MNZM (Ngāi Tūhoe) had his TNZ life membership announced.
- 2023 TNZ master's National Individual Championships Māori players results:
GOLD WINNERS:
30-40+WS Tania Martin / 60+ WD Leona Kaye-Ivitu / 50+ XD Jane Wylie / 55+ WD Delwyn Guildford / 40+ XD Casey Tarau
SILVER WINNERS:
30-40+WS Paula Stubbing / 50+ WS Jane Wylie / 45-50+ WD Jane Wylie / 40+ XD Paula Stubbing / 45+ MD Adam Whauwhau / 65-70+ WD Norma Ching
BRONZE WINNERS:
30-40+WS Casey Tarau / 30-40+WD Casey Tarau/ Paula Stubbing / 60+ WS Jane Geldard
- Dame Ruia Morrison (DNZM MBE) korowai presentation, at the 2023 ASB Women's Classic January 10, 2023
- Aotearoa Māori Tennis will be hosting it's 97th championships at the Waikato Tennis Centre this December 27-30, 2023, leading up to it's rau tau (100years) in 2026.

RICHARD (DICK GARRATT) MNZM

President

ADAM WHAUWHAU

Cultural Advisor

GEOFF KAYE-IVITU

Treasurer

THE INTERNATIONAL LAWN TENNIS CLUB OF NZ

It is with pleasure I report on the 66th year of our club.

MEMBERSHIP

Members 114
Honorary 37
Overseas 32
Touring 6

As I reported last year, Covid lockdowns have interrupted several of our planned activities but we managed to hold both our 66th AGM and our Dinner in the last year.

We held them separately, the AGM by Zoom in May and then when life was more normal we held a very successful Annual Dinner in September. Our thanks again to our Life Member Brian Woolf who so generously covered the costs for this.

IC PHILANTHROPY - ACE PROGRAMME

The ACE Programme recommenced in Term 4 2022 at Bairds Mainfreight Primary School in Otara with 50 children over eight successive weeks.

The school elected to have the classes of 2021 attend again; we were delighted with the outcomes which demonstrated that the ACE Programme, in its present format, is of tremendous value as a repeat.

One of our objectives as part of restarting was to identify coaches who we believe could lead the delivery of future ACE Programmes.

To that extent, we were very fortunate to have received the support of the Lavie Tennis Academy, who have very generously agreed to provide coaching assistance to the ACE Programme in the future.

In addition, one of our experienced coaches has agreed to lead our first ACE Programme in 2023, commencing in April.

We continue to be grateful to ICP UK for seeding our 2023 calendar year programme and our ICNZ membership for their financial support.

We have begun the process for seeking community funding for the ACE Programme, through local boards. The ACE Programme now has an experienced track record, excellent references, audio-visual collateral and documented lessons.

We are now well placed to seek philanthropic support from community enterprises.

ASB CLASSIC INTERNATIONAL TOURNAMENTS

I'm pleased to report that after missing 2 years the tournaments were held again and over both Mondays we had very enjoyable morning and afternoon teas. Thanks to Tennis Auckland for the use of the Legends Lounge and to new sponsors ...2 of our members, Julian and Mel and their Plexipave court marking business.

THE BRIAN WOOLF TROPHY

Successfully held at Parnell on the same day as our September Dinner.

THE SEDGMAN TILLS TROPHY

After trying to hold the return match for the last 2 years we succeeded in March this year when a smallish but enthusiastic team of Australians and their partners played our team in Wanaka. The weather was great and tennis hard fought with most matches going to the 3rd set tie break. NZ held on to the Trophy with some talk of the next match being held in Melbourne in 2 years.

IC COUNCIL OF INTERNATIONAL LAWN TENNIS CLUBS

With Wimbledon being played once again the AGM was held on the middle Sunday. Our representative was Mark Hadley.

In August we combined with the Australian IC to enter teams into the Juego de Pelota (Men 65+ and 75+) and La Carreta (Women 50+ and 60+) Council events as part of the US IC 90th Anniversary.

OBITUARIES

We were very sad to lose our Patron Jeff Robson MBE. He was an inaugural member of ICNZ when it was formed in Wellington in 1956, and a valued Life Member who always came to our AGM's, Dinners, and the January morning teas. A special tribute was paid to Jeff in the December 2022 Newsletter.

We are also sad to report the passing of Barrie Shute ONZM, mentioned in August and Claude England in the February issue.

MEMBERS

Des Shaw has continued to represent Australasia on the IC Council Executive Committee.

CECILIE MCINTYRE

ICNZ President



NZ WHEELCHAIR TENNIS

Well what an exciting year it's been for New Zealand Wheelchair Tennis.

Highlights included our reappearance at the 2023 ASB Classic in January during the men's semi finals. Glenn Barnes and Travis Moffat participated in an exhibition match with Ajeet Shakan Rai and K P Pannu which was well received and really special to be included in this event after 12 years.

Another highlight was the Inclusion Adaptive day held at Manukau Sports Bowl incorporating Blind/ low vision players, Autistic players and Wheelchair tennis players. The crowd were super impressed when Cameron Norrie was persuaded to have a go in a wheelchair for a tiebreaker or two with local players.

Our usual tournaments were continued around the country in Auckland, Christchurch and culminating with the National Champs in Hamilton.

We held the bi- annual Rob Courtney Memorial champs – always a diverse level of players support this tournament to honour Rob the legend that he was in tennis and other para sports.

Alongside all these events our collaboration with Tennis NZ continues in the JDC workshops and the events we are continuing to plan for the remainder of this year.



These include a Player/ Coach Development Camp to be held in October with Aussie legend coach Greg Crump.

Also our National Champs will be held for the first time alongside a high profile tournament in Papamoa.

NIKKI HOWLET

NZ Wheelchair Tennis President

NZ TENNIS UMPIRES ASSOCIATION

The 2022- 2023 has been a significant year for officiating in New Zealand. New Zealand ITF Badged Officials have all been busy throughout New Zealand and the World.

NZTUA has trained over 30 new officials this past year. We held a Chair umpire and Referee Course Line Umpires, Court Supervisors, Referee's and Chair Umpires this season and it is fabulous to see more officials taking up roles throughout New Zealand. Significant progress has been made to align NZTUA with Tennis New Zealand and I would like to thank the board for their support, guidance and expertise with this, along with NZTUA Life Member Peter Maciaszek, who has given us such great advice throughout this process and Mark Atkins from Tennis NZ.

I would also like to take this opportunity to thank the NZTUA Board - Sandie Newton, Matthew Burrell, Laura Phillipson, David Verrinder, Ross Morrison, Hamish Masters, Ching Evans, and Ashay Sheketkar who have been great supporters and champions of this new and exciting change to officiating in New Zealand. In addition, I wish to acknowledge the significant contribution of the NZTUA Administrator, Tracy O'Connor as her work has been essential for our organisation to function properly.

We have had a number of international officials busy throughout the year. Silver Badge Referee David Smith has worked tirelessly for the Oceania Tennis Federation organising events and courses and working with smaller tennis federations to improve their capabilities, while also working as a Referee for the Fiji Open.

Silver Badge Chief of Officials Christine McKnight has been busy around New Zealand working at the New Zealand WTT events in Wellington and Papamoa, followed by the ASB Classic ATP event. In February Christine was the Chief at the Davis Cup tie in Christchurch against Bulgaria. Christine has been part of the team who trained some new officials as Court Supervisors and Line umpires while working as a Court Supervisor herself at a variety of events around Auckland. In September 2023 Christine is the Chief of Officials at the Davis Cup tie in Invercargill against Thailand.

White Badge Official Dimitar Trifunovski has been working fulltime as a Review Official at a variety of tournaments throughout the world including: Montreal ATP 1000, Cincinnati Combined 1000, Winston Salem ATP 250, US Open 2022, Astana ATP 500, Antwerp ATP 25, Vienna ATP 500, Paris ATP 1000, Milan Next Gen Finals Turin ATP World Tour Finals (line umpire), ASB Classic Auckland Combined 250, Australian Open 2023, Abu Dhabi WTA 250, Doha Combined ATP250/WTA500, Indian Wells Combined 1000, Miami Combined 1000, Madrid Combined 1000. Dimitar was



then selected as a line umpire for the Women's Final of the French Open. This was the one event that he had been missing to complete all grand slam finals, men's and women's and Olympic gold medal match men's and women's. Double Golden Slam. Then it was off to Queens ATP 500, Eastbourne Combined 250, Wimbledon 2023, Bastad ATP 250, Washington DC Combined 500, Toronto ATP 1000 – followed by Cincinnati, Winston Salem and the US Open 2023.

White Badge Referee Patrick O'Rourke has also been very busy. In August 2022 Pat was the Tournament Director of the Kiwi Indoor 14u, Kiwi Indoor 12u and the Kiwi Indoor 16u. In September 2022 it was off to the ITF/OTF Pacific Oceania 12u Teams Event in Fiji, along with the ITF/OTF Pacific Oceania 14/16u Championships in Fiji followed by the J5 WTTJ event Auckland - ITF Supervisor. In October 2022 Pat was the ITF Supervisor for the J3 WTTJ Auckland, J4 WTTJ Fiji and J5 WTTJ Fiji. During November 2022 Pat was the referee for the Caro Bowl Mens Semi-Final and Final, along with the Caro Bowl Women's Final and the ASB Classic Men and Women's Wild Card Playoff. January 2023 saw Pat as the ITF Supervisor at the J60 WTTJ in Christchurch and the J100 WTTJ in Auckland. During May 2023 Pat was the referee for the Chelsea Cup Men's and Women's final followed by the J30 WTTJ in Fiji. Pat has also helped NZTUA refresh the referee's course and delivered to a number of new referee's.

White Badge Chair Umpire Hamish Masters has worked at Kiwi Indoors, along with the Junior ITF's in Auckland and Christchurch. In December 2022 he was part of the Chair Umpire team for the World Tennis Tour events in Wellington and Papamoa. In January 2023

saw Hamish as part of the line umpire team at the WTA and ATP in Auckland, where he was also selected as a Chair Umpire. Then he was off to Korea for the ITF 25K Women's followed by Guam Junior ITF J60 as Assistant Ref (where the tournament was wiped out by a Super Typhoon). Japan (Kawaguchi) ITF 15K Womens was next on the journey followed by 2 weeks in Caloundra, Australia ITF 15K Mens & Womens. Hamish also helped train new chair umpires in Auckland in 2022.

White Badge Chair Umpire Melissa Rigby has been travelling around the world this season. In October 2022 Melissa travelled to Tokyo as a line umpire for the Rakuten Japan Open ATP 500 event. She then worked at the 18's/14's Nationals as Referee and then the Wellington Open and WTT events in Wellington and Papamoa as a Chair umpire. Then it was off to the ASB Classic where Melissa chair umpired five WTA matches before line umpiring for the rest of the two weeks. After working at the ITF juniors in Auckland at the end of January Melissa spent two weeks as a chair umpire in Burnie, Tasmania for a WTT women's 60k and a combined 25k event. Melissa was selected by the ITF for an opportunity at the end of July to attend the BJKC group II event in Malaysia as a chair umpire. In September 2023 Melissa is travelling to Japan for two weeks of WTT events as a chair umpire before heading to Hong Kong to line umpire at the WTA 250 event in October.

White Badge Chair and Referee Matthew Burrell was the EOW referee for the Wellington WTT event while also Chair Umpiring at both the Wellington and Papamoa WTT events. Matthew also was the referee for the ITF Junior Event in Wellington and the ITF Junior Event in Christchurch. Matthew also was the referee at the National Teams event in Christchurch. Matthew has been working hard behind the scenes giving advice and counsel to the NZTUA committee this year which has been much appreciated.

Other NZ officials who have had the opportunity to work overseas this year are Ching Evans who traveled to Europe as a Line Umpire and worked at the Munich ATP 250, the Wiesbaden Tennis Open (Germany), the Nottingham WTA250 & ATP Challenger Tour 125 and the Ilkley ATP Challenger 125 & W100. Laura Phillipson was a Line Umpire at the Hong Kong WTA250 event and Tony Brosnahan, Tony Glentowrth and Desrae Garratt all worked in Samoa for the Oceania Tennis Federation alongside Silver Badge Referee David Smith.

CHRISTINE MCKNIGHT

NZTUA Chairperson





TENNIS IN NZ AWARDS

The 2022 Tennis NZ Awards were held on the 18th of December 2022 at the Pāpāmoa Surf Life Saving Club to celebrate and acknowledge the achievements of clubs, players, volunteers/administrators and the tennis community over the past year.

The event coincided with the EVES Open – ITF WTT tournament being held this week at Venture Developments WBOP Tennis Centre, Papāmoa.

Player of the Year award winner Erin Routliffe had the most successful year of career rising from a ranking of #55 at the start of the year to a career high of #29. Erin played in all 4 grand slams for the first time, most notably making the quarter-finals of Wimbledon. 2022 also brought Erin a WTA 250 title in Washington DC. The Washington WTA tournament was made possible by TNZ leasing the rights to the women's tour event after the cancellation of the 2022 ASB Classic. Erin played with American Jessica Pegula and narrowly missed out 3 other titles, making finals of WTA 500 Bad Homburg and St Petersburg and WTA 250 Ostrava. Erin also made quarter finals at two WTA 1000 events.



TENNIS IN NZ AWARD 2022 WINNERS

PLAYER OF THE YEAR

Erin Routliffe

NZ SINGLES JUNIOR FEMALE PLAYER OF THE YEAR

Vivian Yang

NZ SINGLES JUNIOR MALE PLAYER OF THE YEAR

Jack Loutit

NZ SINGLES FEMALE PLAYER OF THE YEAR

Monique Barry

NZ SINGLES MALE PLAYER OF THE YEAR

Ajeet Rai

WHEELCHAIR PLAYER OF THE YEAR

Travis Moffat

MASTERS PLAYER OF THE YEAR

Jane Wyllie

NATIONAL JUNIOR TEAMS EVENT CHAMPIONS

Auckland

OFFICIAL OF THE YEAR

Melissa Rigby

MOST IMPROVED OFFICIAL OF THE YEAR

Mark Hurly

VOLUNTEER OF THE YEAR

Paul Tibbutt, Pakuranga Tennis Club

PROFESSIONAL COACH OF THE YEAR

Nic Jenkins

CLUB OF THE YEAR

Whanganui Tennis Club

LOVE TENNIS CLUB AWARD

Nelson Lawn Tennis Club

CLUBSPARK CLUB AWARD

Pāpāmoa Tennis Club

NATIONAL PROGRAMMES PROJECT AWARD

The Hot Shots Orange Ball League & Tennis Central Region

CLUB & COMMUNITY COLLABORATION AWARD

Ngatira Tennis Club

TE TOHU HĀPAI – SERVICE HONOURS

Tennis New Zealand recognises that at the heart of the delivery of the sport of tennis in New Zealand is the large body of volunteers who either provide governance of the sport throughout the country or who deliver the sport in many ways including as administrators, coaches and officials.

Many provide such contributions over many years, often decades, and sometimes over a lifetime and so Tennis New Zealand has established Te Tohu Hāpai, an award providing national recognition for long service to the sport within New Zealand across a wide spectrum of forms of contributions.

Te Tohu Hāpai now provides national recognition for lifetime service and therefore complements the Tennis New Zealand Life Membership award (Te Tohu Taumata).

The new honour is based on the following key concepts:

- He Ngakaunui - dedication / commitment to tennis
- He Manaakitanga nui - care / impact on tennis
- He Kaitiakitanga – stewardship / guardianship of tennis

The Selection Panel received many nominations and in this inaugural year awarded the Te Tohu Hāpai honour to nine recipients.

CONGRATULATIONS TO

SAM CLARKE

Coach + Administrator, Canterbury Region

DAVID MUNRO

Official + Administrator, Canterbury Region

CILLA PAULIK

Coach + Administrator, Central Region

NIGEL PERRY

Administrator, Canterbury Region

ALLAN TOWNSEND

Administrator, Waikato-Bays Region

BETH WEBSTER

Administrator, Central Region

SYLVIA WILMSHURST

Administrator, Waikato-Bays Region

KEVIN WOOLCOTT

Player + Coach, Northern Region

BRIAN WOOLF

Player + Administrator, Auckland Region

RESULTS & RANKINGS

ASB CLASSIC

Auckland
2 – 14 January 2023

WOMEN'S SINGLES FINAL

C Gauff (USA) beat R Masarova (ESP) 6-1 6-1

WOMEN'S DOUBLES FINAL

M Kato (JPN)/A Sutjiadi (IND) beat L Fernandez (CAN)/B Mattek-Sands (USA) 1-6 7-5 [10-4]

MEN'S SINGLES FINAL

R Gasquet (FRA) beat C Norrie (GBR) 4-6 6-4 6-4

MEN'S DOUBLES FINAL

N Mektic /M Pavic (CRO) beat N Lammons/J Withrow (USA) 6-4 6-7(5) [10-6]

DAVIS CUP

WORLD GROUP I (1ST ROUND) V FINLAND

Espoo Metro Areena, Espoo, Finland
16 & 17 September 2022
New Zealand lost to Finland 0 - 5

New Zealand Team:

Ajeet Rai, Kiranpal Pannu, Isaac Becroft, Michael Venus, Artem Sitak, Kelly Evernden (Captain)

WORLD GROUP I PLAYOFF (1ST ROUND) V BULGARIA

Wilding Park, Christchurch, NZ
4 & 5 February 2023
New Zealand lost to Bulgaria 1 - 3

New Zealand Team:
Jose 'Rubin' Statham, Kiranpal Pannu, Ajeet Rai, Michael Venus, Artem Sitak, Kelly Evernden (Captain)

BILLIE JEAN KING CUP 2023 ASIA/OCEANIA GROUP II

Kuala Lumpur, Malaysia
24 – 29 July 2023

New Zealand Team:

Erin Routliffe, Vivian Yang, Valentina Ivanov, Jade Otway, Monique Barry, Matt Hair (Captain)

NZ lost to Mongolia 1 – 2
NZ beat Turkmenistan 3 - 0
NZ beat Malaysia 3 - 0
NZ beat Indonesia 2 - 1
NZ beat Sri Lanka 3 - 0
NZ lost to Chinese Taipei 1 – 2



NEW ZEALAND JUNIOR TOURS

New Zealand Teams competed in the ITF Junior Teams Events (World Junior Tennis, Junior Davis Cup and Junior Billie Jean Cup) and Australian Teams and Individual Championships.

WORLD JUNIOR TENNIS ASIA/OCEANIA QUALIFYING COMPETITION

March 2023

New Zealand's World Junior Tennis teams (Boys and Girls 14/u), travelled to Kuala Lumpur, Malaysia for their Asia/Oceania Final Round Qualifying tournament, competing against 16 other nations from the Asia/Oceania region for one of four places in the ITF World Junior Tennis World Finals.

BOYS

Team: Zachariah Wu, Liam Youn, Riley Breen
Captain: Dave Knight

Results:

R1 – NZ lost to Hong Kong 1 - 2
R2 – NZ lost to India 1 - 2
R3 – NZ lost to Chinese Taipei 0 - 3
9th – 16th Playoffs - NZ beat Uzbekistan 0 - 3
9th – 16th Playoffs – NZ lost to Indonesia 1 - 2
9th – 16th Playoffs – NZ lost to Singapore 1 - 2
Final Placing – 12th

GIRLS

Team: Yashwitha Reddy Thummala, Dallas King-Ehau, Una Mistic

Captain: Chris Bint

Results:

R1 – NZ lost to Australia 0 - 3
R2 – NZ lost to Kazakhstan 0 - 2

R3 – NZ lost to Chinese Taipei 0 - 3
9th – 16th Playoffs - NZ beat Sri Lanka 3 - 0
9th – 16th Playoffs – NZ beat Singapore 2 - 1
9th – 16th Playoffs – NZ lost to Chinese Taipei 0 - 3
Final Placing – 10th

JUNIOR BILLIE JEAN KING CUP ASIA/OCEANIA QUALIFYING COMPETITION

May 2023

The New Zealand Junior Billie Jean King Cup (16/u Girls) side competed for a place in the ITF Junior Davis Cup World Finals, competing with 16 other teams from the Asia/Oceania region in the Qualifying event held in Shymkent, Kazakhstan.

Team: Aishi Das, Lucia Gale, Amber Dano
Captain: Emily Fanning

Results:

R1 – NZ lost to Uzbekistan 1 - 2
R2 – NZ lost to Australia 1 - 2
R3 – NZ beat Kyrgyzstan 2 - 1
9th – 16th Playoffs – NZ beat Sri Lanka 2 - 0
9th – 16th Playoffs – NZ beat India 2 - 1
9th – 16th Playoffs – NZ lost to Iran 1 - 2
Final Placing – 10th

JUNIOR DAVIS CUP ASIA/OCEANIA QUALIFYING COMPETITION MAY 2023

The New Zealand Junior Davis Cup side (16/u Boys) competed for a place in the ITF Junior Davis Cup World Finals, competing with 16 other teams from the Asia/Oceania region in the Qualifying event held in Shymkent, Kazakhstan.

Team: Kai Milburn, Archie Stewart, Finn Willman

Captain: Mark Milburn

Results:

R1 – NZ lost to Kazakhstan 0 - 3
R2 – NZ lost to Uzbekistan 1 - 2
R3 – NZ lost to Chinese Taipei 1 - 2
9th – 16th Playoffs - NZ beat Pakistan 3 - 0
9th – 16th Playoffs – NZ beat Indonesia 2 - 0
9th – 16th Playoffs – NZ lost to Chinese Taipei 1 - 2
Final Placing – 10th

2023 AUSTRALIAN JUNIOR TEAMS EVENT – NZ TEAMS

The 11/u, 13/u and 15/u Australian Teams Championships were held on the Gold Coast in June and July 2023.

11u Girls

Rosalie Pollyn (Auckland)

Lily Fannin (Aus based)

Charlize Cashmore (Aus based)

Captain: Dwayne Cleugh

NZ beat Western Australia 3 – 0
NZ beat South Australia 2-1
NZ beat Northern Territory 3 - 0
NZ beat Tasmania 3 - 0
Semi-finals – NZ beat NSW 2- 1
Final – NZ lost to Queensland 1 - 2
Final placing – 2nd place

11u Boys

Levi Wu (Auckland)

Luke Barrett (Central)

Sam James (Auckland)

Captain: Rynold Timothy

NZ beat Northern Territory 3 -0
NZ beat Tasmania 3-0
NZ lost to Queensland 0-3
NZ lost to ACT 0 -3
5th – 8th Playoffs - NZ lost to South Australia 0 - 3
5th – 8th Playoffs - NZ beat Tasmania 3 - 0
Final placing - 7th place

13u Girls

Yashwitha Reddy Thummala(Auckland)

Una Mistic (Auckland)

Dorea Morina (Auckland)

Captain: Chris Bint

NZ beat Pacific Oceania 3 - 0
NZ lost to Queensland 0 -3
NZ beat Tasmania 3 - 0
NZ beat Northern Territory 3 - 0
Semi-finals - NZ lost to NSW 0 - 2
3rd & 4th Playoff - NZ beat South Australia 3 - 0
Final placing – 3rd place

13u Boys

Zachariah Wu (Auckland)
Liam Youn (Auckland)
Joshua Gilbert (Canterbury)
Captain: Nic Jenkins

NZ beat Northern Territory 3 – 0
NZ lost to Victoria 1 – 2
NZ beat South Australia 3 – 0
NZ lost to Western Australia 1 – 2
5th – 8th Playoffs - NZ beat Tasmania 2 - 0
5th – 8th Playoffs - NZ beat ACT 2 – 0
Final placing - 5th place

15u Girls

Lucia Gale (Canterbury)
Nishitha Maarka (Canterbury)
Ayla Giesen (Central)
Captain: James Meredith

NZ lost to NSW 0 - 3
NZ lost to ACT 0 - 3
NZ lost to Victoria 1 - 2
5th – 8th Playoffs - NZ lost to South Australia 0 – 3
5th – 8th Playoffs - NZ beat Tasmania/NT 2 - 1
Final placing – 7th place

15u Boys

Jack Hansen-Ratter (Canterbury)
Dan Millburn (Southern)
Archie Stewart (Aus based)
Captain: Jack Tiller

NZ lost to Queensland 1 - 2
NZ beat Tasmania 3 - 0
NZ beat ACT 3 - 0
NZ lost to NSW 1 – 2
5th – 8th Playoffs - NZ beat Western Australia 2 - 0
5th – 8th Playoffs - NZ lost to Queensland 1 - 2
Final placing – 6th place

Travelling Strength & Conditioning Coach:
Celine Schneider
Manager – Ghislaine Brien

THE 2022/23 TENNIS NZ SELECTION PANEL: SELECTION PANEL

Emily Carter (High Performance Manager; Convenor),
Matt Alexander (Development Coach), Sebastian Lavie
(Independent), Dave Knight (Independent)

NATIONAL JUNIOR COMPETITIONS

KIWI INDOORS 14U

Albany
21 – 23 October 2022

Boys Singles Final
Z Wu beat J Hansen-Ratter 6-4 6-3

Boys Doubles Final
J Hansen-Ratter/A Savelli beat Z Wu/L Youn 3-6 7-5 10-8

Girls Singles Final
L Gale beat Y Reddy Thammala 6-2 6-1

Girls Doubles Final
L Gale/M Liu beat D King-Ehau/A Tran 6-2 6-0

KIWI INDOORS 12U

Auckland
25 – 27 October 2022

Boys Singles Final
R Savelli beat A Na 7-6(1) 3-6 6-2

Boys Doubles Final
J Rupe/R Savelli beat L Howes/A Moy 6- 2 6-2

Girls Singles Final
Y Reddy Thammala beat S Robin 6-1 6-0

Girls Doubles Final
E Gale/J Wang beat D Morina/S Robin 6-3 6-0

KIWI INDOORS 16U

Auckland
28 - 30 October 2022

Boys Singles Final
H Pugh beat J Giesen 2-6 7-6(2) 6-3

Boys Doubles Final
J Giesen/H Pugh beat J Chapman/M Richardson 6-2 6-1

Girls Singles Final
R Young beat O Brown 6-0 6-3

Girls Doubles Final
C Byers/R Young beat L Gale/A Giesen 4-6 6-4 10-5

2022 TENNIS NEW ZEALAND JUNIOR MASTERS FINALS

Hamilton
29 - 31 October 2022

BOYS 12/u
Singles Final
A Na beat A Moy 6-0 6-1

GIRLS 12/u
Singles Final
Y Reddy Thammala beat D Morina 6-0 6-3

BOYS 14/u
Singles Final
J Hansen-Ratter beat F Littlejohn 7-5 4-6 6-3



GIRLS 14/u
Singles Final
D King-Ehau beat Z Driscoll 6-0 6-4

BOYS 16/u
Singles Final
H Pugh beat J Giesen 6-3 4-6 6-4

GIRLS 16/u
Singles Final
K Oliver beat M Cui 6-4 6-2

2022 NEW ZEALAND JUNIOR CHAMPIONSHIPS 18/U
Auckland
3rd – 7th December 2022

BOYS
Singles Final
D Quispe-Kim beat M Browning 6-2 6-2
Doubles Final
J Giesen/K Milburn beat H Pugh/W Roberts 6-2 3-6 10-7

GIRLS
Singles Final
V Yang beat S Nakano 2-6 7-6(1) 6-0
Doubles Final
V Yang/F Sadgrove beat M Galatescu/R Zhang 6-1 3-6 10-7

2022 NATIONAL CHAMPIONSHIPS 12/U
Auckland
9th – 13th December 2022

BOYS
Singles Final
A Na beat E Pryor 6-3 7-5
Doubles Final
J Moroney/A Na beat L Barrett/R Huang 7-5 6-3
GIRLS
Singles Final
U Mistic beat D Morina 7-6(5) 6-2
Doubles Final
A Daly/D Morina beat U Mistic/S Robin 4-6 6-2 10-7

2022 NATIONAL CHAMPIONSHIPS 14/U
Auckland
3rd - 7th December 2022

BOYS
Singles Final
C Atkinson beat D Milburn 6-1 7-5
Doubles Final
C Atkinson/A Duggan beat J Hansen-Ratter/D Milburn 6-7(2) 7-6(5) 10-4

GIRLS
Singles Final
L Gale beat D King-Ehau 6-1 6-4
Doubles Final
L Gale/A Giesen beat D King-Ehau/A Tran 6-4 6-1

2022 NATIONAL CHAMPIONSHIPS 16/U
Auckland
9th – 13th December 2022

BOYS
Singles Final
K Milburn beat H Pugh 6-1 7-6(3)
Doubles Final
J Giesen/K Milburn beat L Gorb/H Pugh 6-1 6-4

GIRLS
Singles Final
A Das beat M Galatescu 6-2 6-3
Doubles Final
M Galatescu/L Gale beat A Das/A Loutit 6-4 7-6(4)

2022 NATIONAL JUNIOR TEAMS EVENT *
Wellington (16s), Christchurch (14s, 12s)
21st October – 24th October 2022
*Event moved from April to October due to Covid-19 restrictions

FINAL PLACINGS
12/u
1st Auckland
2nd Canterbury
3rd Northern
4th Waikato-Bays
5th Central
6th Southern

2022 NATIONAL JUNIOR TEAMS EVENT CONT.

14/u
1st Auckland
2nd Canterbury
3rd Waikato-Bays
4th Northern
5th Central
6th Southern

17/u
1st Central
2nd Auckland
3rd Canterbury
4th Northern
5th Waikato-Bays
6th Southern

2022 REGION OF THE YEAR

Auckland

2023 NATIONAL JUNIOR TEAMS EVENT

Hamilton (16s), Christchurch (14s, 12s)

20th – 23rd April 2023

FINAL PLACINGS

12/u
1st Auckland
2nd Northern
3rd Canterbury

4th Central
5th Waikato-Bays
6th Southern

14/u
1st Auckland
2nd Northern
3rd Canterbury
4th Waikato-Bays
5th Central
6th Southern

17/u
1st Northern
2nd Auckland
3rd Canterbury
4th Central
5th Waikato-Bays
6th Southern

2023 REGION OF THE YEAR

Auckland

2023 NATIONAL SECONDARY SCHOOLS

TENNIS TEAMS FINAL

Christchurch
27 – 30 March 2023

FINAL PLACINGS

BOYS

1st Westlake Boys High School
2nd Christ's College
3rd Tauranga Boys College

GIRLS

1st Queen Margaret College
2nd Saint Kentigern College
3rd Saint Margaret's College
4th Saint Cuthberts College

MIXED

1st Kings College
2nd Scots College
3rd Macleans College
4th Saint Andrew's College
5th Ashburton College

NEW ZEALAND ITF 18/U JUNIOR EVENTS

J5 AUCKLAND

26 – 30 September 2022

Boys Singles Final

D Quispe-Kim (NZL) beat D McCall (NZL) 6-2 6-1

Boys Doubles Final

M Browning/W Roberts (NZL) beat H Pugh/D McCall (NZL) 7-5 6-3

Girls Singles Final

A Aulia (AUS) beat R Zhang (NZL) 6-0 6-3

Girls Doubles Final

R Young (NZL)/A Zylberman (AUS) beat B Mihulka/A Sycamore (AUS) 6-4 2-6 10-6

J3 AUCKLAND

3 – 7 October 2022

Boys Singles Final

D Quispe-Kim (NZL) beat M Browning (NZL) 6-2 6-0

Boys Doubles Final

H Pugh/D McCall (NZL) beat D Quispe-Kim (NZL)/R Shukuda (JPN) 7-5 1-6 11-9

Girls Singles Final

L Chu (TPE) beat R Zhang (NZL) 3-6 7-6(5) 6-1

Girls Doubles Final

J Cvijanovic/S Rokusek (AUS) beat D Badalyan/A Zylberman (AUS) 6-1 6-3

J3 CANTERBURY CHRISTCHURCH

11 - 15 October 2022

Boys Singles Final

D Quispe-Kim (NZL) beat D McCall (NZL) 6-0 6-0

Boys Doubles Final

D McCall/H Pugh (NZL) beat J Giesen/K Milburn (NZL) 7-5 6-2

Girls Singles Final

G Gregg (AUS) beat A Aulia (AUS) 6-3 6-0

Girls Doubles Final

J Cvijanovic/S Rokusek (AUS) beat A Aulia/E Ivanov (AUS) 6-2 6-2

J60 CHRISTCHURCH

10 - 15 January 2023

Boys Singles Final

J Leach (USA) beat D Macababba (AUS) 6-1 6-2

Boys Doubles Final

F Burridge/H Pugh (NZL) beat J Giesen/K Milburn (NZL) 1-6 7-6(7) 10-6

Girls Singles Final

A Bittner (USA) beat I Wen Wan (TPE) 4-6 6-1 6-1

Girls Doubles Final

M Galatescu/R Zhang (NZL) beat E Lozitskaya (AUS)/I Wen Wan (TPE) 7-6(5) 6-2

J60 WELLINGTON

17 - 22 January 2023

Boys Singles Final

J Leach (USA) beat R Shukuda (JPN) 7-5 6-2

Boys Doubles Final

K Milburn/H Pugh (NZL) beat D Macababba (AUS)/Rintaro Shukuda (JPN) 6-4 6-4

Girls Singles Final

R Zhang (NZL) beat A Bittner (USA) 6-3 7-5

Girls Doubles Final

M Galatescu/R Zhang (NZL) beat R Young (NZL)/A Zylberman (AUS) 4-6 6-3 10-5

J100 AUCKLAND

24 - 29 January 2023

Boys Singles Final

J Leach (USA) beat J Dembo (AUS) 6-0 6-0

Boys Doubles Final

H Baxter /J Hahn (AUS) beat T Bevan /W Roberts (NZL) 6-3 3-6 10-7

Girls Singles Final

A Bittner (USA) beat A Das (NZL) 6-2 6-1

Girls Doubles Final

A Bittner (USA)/I Wen Wan (TPE) beat M Galatescu/R Zhang (NZL) 6-2 2-6 10-6



OFFICIAL NATIONAL SENIOR RANKING LIST

As at 31st December 2022

WOMEN

Ranking	Name
1	Yang, Vivian
2	Hourigan, Paige
3	Barry, Monique
4	Routliffe, Erin
5	Otway, Jade
6	Ivanov, Valentina
7=	Lewis, Jade
7=	Westbury, Katherine
9	Fanning, Emily
10	Nola, Pavlina
11	Tse, Elyse
12	McLean, Ivy
13	Nakano, Shona
14	Southwood, Kelly
15	Mason, Abby
16	Zhang, Renee
17	Situe, Sasha
18	Cliffe, Stella
19=	Wardenburg, Sarah
19=	Weekley, Sarah

MEN

Ranking	Name
1	Rai, Ajeet
2	Statham, Rubin
3	Pannu, Kiranpal
4	Becroft, Isaac
5	Reynolds, Finn
6	Watt, James
7	Loutit, Jack
8=	Reynolds, Rob
8=	Stoupe, George
10	Crowther, Corban
11=	Heap, Connor
11=	Quispe-Kim, Diego
11=	Purcell, Rhett
11=	Tearney, Finn
15	Falck, Reece
16	Meredith, James
17	Mendieta, Francisco
18	Shepp, Anton
19	Klintcharov, Alex
20	Megraw, Justin

2022 ITF JUNIOR WORLD YEAR END RANKINGS

The ITF world junior rankings (18/u) for the year ended 31st December 2022 of New Zealand players who participated on the world junior circuit during 2022.

GIRLS

109	YANG, Vivian
215	SITUE, Sasha
344	NAKANO, Shona
350	ZHANG, Renee
609	GALATESCU, Maria
739	DAS, Aishi
945	YOUNG, Ruby
1095	NEWMAN, Audrey
1121	GALE, Lucia
1311	ANDERSON, Emma
1735	ZHU, Zixin Xinxin
1746	STAIRMAND, Rosearna
1749=	LOUTIT, Annabelle
1829	DECRUY, Kyna
1856	SADGROVE, Faith
1864=	MAARKA, Nishitha
2057	HETHERINGTON, Natalie
2152=	OLIVER, Katie
2222	BOLTON, Alice
2238=	PATUWAIRUA, Leah
2481=	KRZANIC-SULLIVAN, Mala
2645=	ROBERTS, Emma
2839=	DANO, Amber
2839=	ALDRIDGE, Jessica
3116=	WARREN, Sasha
3116=	BYERS, Charlotte
3271=	LI, Jessica Sue
3285=	COLLINSON, Jaimee
3494=	GIESEN, Ayla
3494=	BROWN, Olivia
3494=	ROSE, Hana
3494=	SAMBHUS, Tuhina
3494=	CUI, Muhan
3494=	UKIL, Boidehi

BOYS

45	LOUTIT, Jack
126	QUISPE-KIM, Diego
343	MCCALL, Duncan
414	HAMMOND, Daniel
524	BROWNING, Matthew
573	PUGH, Harry
813	VAROUHAS-POOLE, Zino
828	MIRKOV, Alexander
901	BURRIDGE, Finn
919	ROBERTS, Will
946	MILBURN, Kai
1033	GIESEN, Jonty
1055	EMSLIE-ROBSON, Finn
1509	MIN, Chan
1553=	MEEHAN, Percy
1606=	BEVAN, Thomas
1702	CHAPMAN, Jack
1768	STEPHENS, Max
1834	HARTLEY, Carrigan
1882=	GORB, Lev
1890	LONG, Stanley
1970	APATU, River
2140=	LIM, Carlson
2146=	SMITH, Ben
2146=	CAMERON, Rohan
2247	BISS, Eddie
2262=	ATKINSON, Cody
2408=	WARREN, Jacob
2408=	HYDE-SMITH, Benjamin
2560=	EVERY, Hunter
2593=	MORRISWALA, Yash
2732=	GRANT, Christoph
2782=	COOKE, Ethan
2782=	DODDRIDGE, Angus
2782=	RICHARDSON, Max
2782=	GEMUHLUOGLU, Aslan
2991=	WIJNTJES, Dominik
3060=	STEWART, Archie
3203=	QUILTY, Jack
3203=	LAL, Aaditya
3203=	LI, Kevin
3439=	EVANS, Lucas
3439=	PHEGAN, Sean
3439=	GONZAGA, EJ Emilio
3558=	WILLMAN, Finn

INTERNATIONAL RANKINGS OF NEW ZEALAND PLAYERS

The International Rankings of New Zealand players on the ATP and WTA circuits as at 31 December 2022

WTA RANKINGS YEAR END 2022

	SINGLES	DOUBLES
Paige Hourigan*	862	780
Monique Barry	886	736
Valentina Ivanov	999	614
Erin Routliffe	1044	32
Vivian Yang	1132	896

*Protected ranking: Singles 395

ATP TOUR RANKINGS YEAR END 2022

	SINGLES	DOUBLES
Ajeet Rai	469	381
Rubin Statham	523	542
Kiranpal Pannu	664	1034
Isaac Becroft	984T	1233
Finn Reynolds	1011	653
James Watt	1082	
Jack Loutit	1126T	2203T
George Stoupe	1469T	1794T
Corban Crowther	1814T	1877T
Michael Venus	-	16
Marcus Daniell*	-	406
Artem Sitak	-	130
Reece Falck		1794T
Oliver (Mikal) Statham	-	2094T

*Protected ranking: Doubles 55

NATIONAL JUNIOR RANKINGS - YEAR END 31ST DECEMBER 2022

18U BOYS

Loutit, Jack	1
Quispe-Kim, Diego	2
Hammond, Daniel	3
Browning, Matthew	4
Mirkov, Alexander	5
Pugh, Harry	5
Min, Hyeok	7
Emslie-Robson, Finn	8
Mccall, Duncan	9
Milburn, Kai	10
Stephens, Max	11
Roberts, Will	12
Lim, Carlson	13
Shoeman, Marcus	14
Giesen, Jonty	15
Chapman, Jack	16
Varouhas-Poole, Zino	16
Burridge, Finn	18
Grant, Christoph	19
Min, Chan	20
Bevan, Tom	21
Long, Stanley	22
Gorb, Lev	23
Dai, Thomas	24
Biss, Eddie	25
Every, Hunter	26
Barrett, Liam	27
Smith, Ben	28
Carter, Ryan	29
Cameron, Rohan	30

18U GIRLS

Yang, Vivian	1
Tse, Elyse	2
Nakano, Shona	3
Zhang, Renee	4
Situe, Sasha	5
Galatescu, Maria	6
Das, Aishi	7
Young, Ruby	8
Gale, Lucia	9
Anderson, Emma	10
Decruy, Kyna	11
Beer, Lize-Mari	12
Bogomazova, Kristina	13
Giannakogiorgou, A	14
Oliver, Katie	15
Loutit, Annabelle	16
Liu, Sammi	17
Cui, Muhan	18=
Brown, Olivia	18=
Tuatao, Taleia	20
Sambhus, Tuhina	21
Tse, Charlotte	22
Byers, Charlie	23
Warren, Mahinarangi	24
Newman, Audrey	24
Reddy, Yashwitha	26
Sadgrove, Faith	27
King-Ehau, Dallas	28
Dano, Amber	28
Maarka, Nishitha	30

16U BOYS

Pugh, Harry	1
Milburn, Kai	2
Giesen, Jonty	3
Chapman, Jack	4
Min, Chan	5
Gorb, Lev	6
Biss, Eddie	7
Li, Kevin	8
Evans, Lucas	9
Cooke, Ethan	10
Naidoo, Nehal	11
McGregor, Jack	12
Gonzaga, Emilio	13
Parsons, Jake	14
Richardson, Max	15
Hansen-Ratter, Jack	16
Milburn, Dan	17
Lal, Aaditya	18=
Bhawan, Aryav	18=
Tuxford, Nikko	20
Wu, Zachariah	21
Watt, Ryan	22
Kotepong, Ricky	23=
Willman, Finn	23=
Breen, Riley	25
Wiseman, Lucca	26
Gonzalez, Santiago	27
Youn, Liam	28
Avery, Tomi	29
Baird, George	30

16U GIRLS

Zhang, Renee	1
Situe, Sasha	2
Galatescu, Maria	3
Das, Aishi	4
Young, Ruby	5
Gale, Lucia	6
Bogomazova, Kristina	7
Oliver, Katie	8
Loutit, Annabelle	9
Liu, Sammi	10
Cui, Muhan	11=
Brown, Olivia	11=
Sambhus, Tuhina	13
Byers, Charlie	14
Warren, Mahinarangi	15=
Newman, Audrey	15=
Reddy, Yashwitha	17
King-Ehau, Dallas	18=
Dano, Amber	18=
Maarka, Nishitha	20
Giesen, Ayla	21
Misic, Una	22
Ukil, Boidehi	23
Zhu, Xin-xin	24
Chapman, Annabel	25=
Tran, Audrey	25=
Campbell, Mia	27
Roberts, Emma	28
Sowman, Ella	29
Krzanic-Sullivan, Mala	30

14U BOYS

Hansen-Ratter, Jack	1
Milburn, Dan	2
Wu, Zachariah	3
Breen, Riley	4
Gonzalez, Santiago	5
Youn, Liam	6
Na, Alvin	7
Bland, Luca	8
Atkinson, Cody	9
Tay, EeJin	10
Littlejohn, Felix	11
Parnell, Sakeri	12
Duggan, Andre	13
Maling, Paxton	14
Burrows, James	15
Gilbert, Joshua	16=
Gibbons, Luke	16=
Baird, Johnny	18
Milburn, Noa	19
Flanagan, Max	20
Aikawa, Tate	21=
McCashin, Bede	21=
Savelli, Alex	23
de Lautour, Louis	24
Hsieh, Sebastian	25
Li, Leo	26
Pryor, Ethan	27
Chan, Nevin	28
Savelli, Raphael	29
Zhang, Ethan	30

14U GIRLS

Das, Aishi	1
Gale, Lucia	2
Reddy, Yashwitha	3
King-Ehau, Dallas	4=
Dano, Amber	4=
Giesen, Ayla	6
Misic, Una	7
Ukil, Boidehi	8
Chapman, Annabel	9=
Tran, Audrey	9=
Daly, Aliyah	11=
Dickey, Genevieve	11=
Morina, Dorea	13
Pozarosczyk, Marta	14
Liu, Maia	15
Wang, Jessica	16
Scheepers, Danielle	17
Gale, Emme	18
Driscoll, Zoe	19
Robin, Samaara	20
Dunn, Emily	21=
Pollyn, Rosalie	21
Liu, Tracy	23=
Speirs, Keira	23=
Filipovic, Marija	25
Power, Lara	26
Souphanthavong, S.	27=
Henare, Aria	27=
Doddridge, Ava	29
Daniel, Daniella	30=
Young, Lucy	30=

12U BOYS

Breen, Riley	1
Wu, Zachariah	2
Gilbert, Joshua	3
Savelli, Raphael	4
Youn, Liam	5
Milburn, Noa	6
Na, Alvin	7
Parnell, Sakeri	8
Bland, Luca	9
Maling, Paxton	10
Dutton, Michael	11
Gibbons, Luke	12
Fussell, Sam	13
Flanagan, Max	14
McCashin, Cullen	15
Campbell, Mathew	16
Howes, Liam	17=
Dong, Yu An	17=
Pryor, Ethan	19
Wang, Sunny	20
Rayner, Nicholas	21
Karathra, Jake	22
Huang, Ridley	23
Saint, Matthew	24
Driscoll, Harry	25
Mardanus-Budiono,	26
Kindt, Charles	27
Moy, Alexander	28
Blair, Hugh	29
Wheeler, Jack	30

12U GIRLS

Reddy, Yashwitha	1
Tran, Audrey	2=
Ukil, Boidehi	2=
King-Ehau, Dallas	4
Misic, Una	5
Daly, Aliyah	6
Filipovic, Marija	7
Dunn, Emily	8
Pozarosczyk, Marta	9
Power, Lara	10
Rawlence, Chloe	11
Morina, Dorea	12
Gale, Emme	13
Robin, Samaara	14
Pollyn, Rosalie	15
Wang, Jessica	16=
Johnson, Gemma	16=
Jackson, Ceressa	18
McCashin, Charlotte	19
Souphanthavong,	20
Kaur, Ashpreet	21
Fannin, Lala	22
Liu, Tracy	23
Scutt, Ivy	24=
Campbell, Casey	24=
Fannin, Louie	26
Longman, Sabia	27
Jones, Holly	28
Smith, Lily	29
Waerea-Tamai, Vienna	30

GOVERNANCE

NGĀ WHAKAHAERANGA

The Board's focus for 2022/2023 was to:

- support Tennis New Zealand management in bringing back a full calendar of activity (while also rebuilding the senior team after a couple of long-standing managers moved onto to other opportunities);
- finalise a refreshed Strategic Framework for 2023 – '28;
- progress our important relationship with Aotearoa Māori Tennis Association; and
- map out how TNZ will comply with the new Incorporated Societies Act, and how we can use that opportunity to further modernise our sport.

A small deficit budget was approved to enable those things, as TAB oriented income was uncertain.

Activity did indeed increase during the year. The December 2022 ITF events proved successful for New Zealand players and the Board has supported these events being repeated in 2023. The return of the ASB Classic was welcomed by the tennis community and successful despite the weather challenges. The event provided opportunities for New Zealand players, coaches, officials and included a wheelchair tennis exhibition. The joint venture governance (TNZ and Tennis Auckland) maintains a keen focus on financial sustainability. Appropriate insurance is prioritised to keep our organisations safe.

A refreshed Strategic Framework for Tennis in New Zealand was finalised for the period 2023-2028, integrating the Modernising Tennis Plan and the Strengthen and Adapt projects funded by Sport NZ.



A priority for the Board has been to ensure that TNZ takes a strategic approach to complying with the new Incorporated Societies Act. A tennis community Working Group was set up to provide recommendations on how tennis can use the re-registration process to modernise our sport. Thanks go to Simon Vannini (former chair of Tennis Auckland) for his role as Independent Chair of the Working Group. During the 2023/2024 year steps will be taken towards a new constitution, beginning with a programme of tennis community consultation.

The Board's commitment to Tikanga Rua, our bi-cultural journey, was advanced through the development of a governance policy, called Mana Māori, which sets out the



2022 HONOURS

At the October 2022 TNZ AGM Dick Garratt, President of Aotearoa Māori Tennis, was conferred Life Membership of Tennis NZ, now also known as Te Tohu Taumata.

Board's commitments and aspirations. TNZ has also formalised the support provided by Aotearoa Māori Tennis Association (AMTA) with the creation of a Cultural Advisor role for Adam Whauwhau. Important elements of Tikanga Māori, such as the welcome pōwhiri for visiting Davis Cup teams, are being strengthened and these add to the experience for all involved.

The TNZ New to Governance Programme was run again from March 2023 to support a diverse governance community. This year a cohort of 6 includes 5 regional participants and 1 from Oceania: Rhett Purcell and Tina Barclay from Tennis Northern, Kathy Maling from Waikato Tennis Trust, Carla Kearney and Peter McCorkindale from Tennis Canterbury, and Shalom Akao from Solomon Islands. It is heartening to see now the roles played by past participants and the positive contributions they are making to tennis governance.

Thanks go to TNZ Board members for the significant effort into a variety of workstreams along with ad hoc support to the CEO and management team. Three new board members were welcomed; Chris Hall as an appointed board member and Robyn Kiddle and Phil Wright as elected board members. We farewelled from the Board Deputy Chair Lindsay Mouat, Professor Lesley Ferkins, John Penny and board intern Taylah Johnson.

Thanks to all the volunteer Board Members and Working Group Members who have given their time to the governance efforts of Tennis New Zealand.

TENNIS NEW ZEALAND BOARD



TERRI-ANN SCORER
Chair



PETER MACIASZEK
Deputy Chair



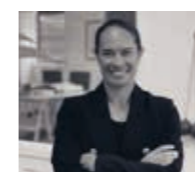
DAVID SEARLE



FIONA STEWART



MARINA ERAKOVIC



REWA HARRIMAN



CHRIS HALL



PHIL WRIGHT



ROBYN KIDDLE

BOARD MEMBERS	ATTENDANCE	BOARD COMMITTEES WORKING GROUPS					OTHER CONTRIBUTIONS
	(July 2022 to June 2023)	Audit & Risk	People & Performance	Honours	Tikanga Rua	ASB Classic	
Terri-Ann Scorer (Chair)	6/6	X	X	X	X	Co-Chair	NSO Chairs Group
Peter Maciaszek (Deputy Chair)	6/6			Chair			Working Group Member
David Searle	6/6	Chair				X	
Fiona Stewart	5/6		Chair				
Marina Erakovic	5/6					X	HP Advisory
Rewa Harriman¹	5/6			X	X		
TO SEPTEMBER 2022:							
Lindsay Mouat (Deputy Chair)	1/2	X					
Prof. Lesley Ferkins	1/2				Chair		
John Penny	2/2						IT Advisory
Taylah Johnson²	2/2				X		
FROM DECEMBER 2022:							
Chris Hall	4/4		X				Working Group Member
Phil Wright	4/4		X				IT Advisory
Robyn Kiddle	3/4	X			X		

1. Co-opted to TNZ Board 2. Board Intern

EXTERNAL CONTRIBUTORS

- 2022 Board Appointment Panel: Pam Elgar (Region's nominee), Stuart McCutcheon (Tennis NZ Board's nominee)
- Honours Selection Panel: Angela Hart (Auckland), Di Keenan (Canterbury), Linda Bain (Central)
- Tikanga Rua Committee: Prof. Lesley Ferkins, Taylah Johnson
- Working Group to Modernise the Governance, Membership, and Constitutions of the Entities in the New Zealand Tennis System: Chris Hall, Gavin Mockford, Geoff Kaye, Hamish Masters, Hayden Wright, Julie Paterson, Linda Bain, Peter Maciaszek, Phil Wright, Robyn Sheves, Maria Clarke, Simon Vannini (Chair), Tash Bartlett

NEW ZEALAND REPRESENTATIVES IN INTERNATIONAL TENNIS FEDERATION COMMITTEES AND COMMISSIONS

- Celia Patrick: Finance and Audit Committee
- David Howman: ITF Ethics Commission
- David Smith: Stakeholder Engagement Taskforce
- Julie Paterson: Advantage All Committee
- Patrick O'Rourke: Juniors Committee
- Terri-Ann Scorer: Constitutional Committee

OCEANIA TENNIS FEDERATION

- David Smith: Executive Officer (joint)
- Terri-Ann Scorer: Board member



FINANCIAL STATEMENTS

TENNIS NEW ZEALAND INCORPORATED
30 JUNE 2023

ENTITY INFORMATION

Tennis New Zealand Incorporated For the year ended 30 June 2023

Nature of Activity

Tennis New Zealand was established in 1886 and is one of the world's oldest tennis associations. It is affiliated to both International Tennis Federation and Oceania Tennis Federation. It is an incorporated society registered under the Incorporated Societies Act 1908.

The objective of Tennis NZ is to promote, organise and foster the game of tennis in New Zealand.

Tennis NZ operates all of the New Zealand's national representative tennis sides, including the New Zealand Davis Cup team, the New Zealand Billie Jean King Cup team and youth sides as well. Tennis NZ is also responsible for organising and hosting tennis tournaments within New Zealand and scheduling home international fixtures.

Board of Directors

Terri-Ann Scorer (President and Chair)
Lindsay Mouat (Audit and Risk Committee)(Deputy Chair) to October 2022
David Searle (Chair of Audit and Risk Committee)
Fiona Stewart
John Penny to October 2022
Marina Erakovic
Peter Maciaszek
Professor Lesley Ferkins to October 2022
Rewa Harriman
Taylah Johnson (Board Intern) to October 2022
Chris Hall from October 2022
Robyn Kiddle from October 2022
Phil Wright from October 2022

Incorporated Society Number

215373

Email and Website

info@tennis.kiwi
www.tennis.kiwi

Physical Address

321 Oteha Valley Road,
Albany, Auckland, 0632

Postal Address

PO Box 300 130
Albany, Auckland, 0752

Auditors

Auditors
BDO Tauranga

STATEMENT OF SERVICE PERFORMANCE

Tennis New Zealand Incorporated For the year ended 30 June 2023

The following table details the proposed measures to demonstrate our work towards our:

Vision: Tennis - Accessible and Thriving

Purpose: Building community through tennis

The following KPI's are those we measure against currently with some additional new measures to reflect our continued strategic focus on coach development and communication.

Pillar	Measure	Description	Actual 2021/22	Actual 2022/23
Grow	Total (known) participants	Total participants including membership, casuals and national programmes	130,918 Members 36,079 Casuals 38,887** Nat Progs 55,907	108,610 Members 41,331 Casuals 24,160** Nat Progs 43,119
	Number of participants in Tennis Hot Shots (THS)	Total participants including Tennis Hot Shots Coaching, Community Play and schools	38,803	43,119
	Number of coach development opportunities delivered (including courses, workshops, webinars etc)	Any in-person or online coach development opportunity organised, facilitated, or delivered by Tennis NZ	12	67*
Enable	Number of Book a Court venues live	Venues with or without hardware, using ClubSpark to offer paid or free bookings for members of public	35	45
	Number of high performance and performance coach development opportunities delivered (including camps, 1-1's, workshops, programmes, webinars etc)	Any in- person or online performance coach or player opportunities organised, facilitated, or delivered by Tennis NZ	0	21*
	Number of clubs and venues using ClubSpark membership management module		132	159

STATEMENT OF SERVICE PERFORMANCE

Pillar	Measure	Description	Actual 2021/22	Actual 2022/23
Win	Number of junior athletes meeting International standard benchmarks through the Targeted Athlete Programme	Number of gold and silver athletes	13	19 Gold : 4 Silver : 15
	Number of International Tennis Federation (ITF) level tournaments held in NZ		7	10 6 ITF Juniors 4 ITF WTT Pro 1 ATP 250 1 WTA 250
	Number of juniors inside ITF Top 100		2	Current 0 (transitioned to seniors)
	Number of players with WTA/ATP ranking		15 singles 15 doubles	Singles WTA:7 Singles ATP: 12 Doubles WTA 9 Doubles ATP 16
Connect	Number of clubs (> 30 members) participating in Love Tennis Campaign		138/162	155
	Total Customer Relationship Management (CRM) contacts		0	57,046

Comparative Figures

The comparative figures have not been audited.

* Note the figures in 2022/23 include both the in-person and on-line opportunities.

** Note that the implementation of a new IT system for capturing of accurate participation numbers has occurred in the last 12 months. Before this, including the 2021/22 season, Casual numbers were manually reported and had no accountability or rigour around them. The introduction of the IT system has meant we now have more accurate understanding of the Casual participation of Tennis, this number will only get more and more accurate as we progress. While this has seen a significant decrease in our Casual numbers, we are overall more confident in the reality of these and as a baseline to grow from.

An example of what Tennis NZ will state has been achieved during the reporting period:

- **Grow: Supporting stakeholders to deliver quality and accessible experiences.** Measure through total participation numbers and Tennis Hotshots % increase, and coach development opportunities
- **Win: NZ players are winning on the international stage.** Measure through # gold, silver players, junior and professional athlete rankings, # ITF Tournaments delivered.
- **Connect: Connect new and diverse communities.** Measure through Tennis NZ systems (CRM), Love Tennis club engagement
- **Enable the tennis community to support growth.** Measure through number of clubs using ClubSpark membership management, number of Book-a-Court clubs, number of coach development opportunities.

APPROVAL OF FINANCIAL REPORT

Tennis New Zealand Incorporated For the year ended 30 June 2023

The Board of Directors are pleased to present the approved financial report including the historical financial statements of Tennis New Zealand Incorporated for year ended 30 June 2023.

The Board and Management accept responsibility for the preparation of the Financial Statements and judgements used in them, and hereby adopt the Financial Statements presented. They also accept the responsibility for establishing and maintaining a system of internal control designed to provide reasonable assurance as to the integrity and reliability of financial reporting and service reporting. In the opinion of the Board and Management, the Financial Statements for the year ended 30 June 2023 fairly reflect the financial position, financial performance and cash flows of Tennis New Zealand Incorporated.

APPROVED



Terri-Ann Scorer
President and Chair

Date 12/10/2023



David Searle
Chair of Audit & Risk Committee

Date 12/10/2023

STATEMENT OF COMPREHENSIVE REVENUE AND EXPENSES

Tennis New Zealand Incorporated For the year ended 30 June 2023

	NOTES	2023	2022
Revenue			
Revenue From Non-Exchange Transactions			
International Tennis Federation Funding	1	196,971	271,290
Grants and Community Trusts	1	196,894	173,226
Other Income	1	36,428	10,235
Sport New Zealand	1	612,016	521,196
Totalisator Agency Board	1	1,954,132	1,444,619
Total Revenue From Non-Exchange Transactions		2,996,440	2,420,566
Revenue From Exchange Transactions			
Affiliation fees		492,426	474,821
Domestic Tournaments, Courses and Hot Shots		395,681	102,506
Interest Received	2	61,919	26,066
International Tournaments		360,784	311,240
Regional Performance Program		10,775	15,855
Sponsorship		152,869	137,496
Total Revenue From Exchange Transactions		1,474,454	1,067,984
Total Revenue		4,470,894	3,488,550
Expenses			
Administration	3	1,296,192	1,154,433
Coaching	3	246,900	169,028
Davis Cup / Billie Jean King Cup	3	463,986	514,498
Events -National and Other	3	564,033	158,997
High Performance	3	1,294,966	826,152
Marketing and Communication	3	485,961	522,657
Participation	3	383,737	372,262
Total Expenses		4,735,776	3,718,025
Share of Equity Accounted Investees Surplus/(Deficit) for the year			
ASB Classic Tournaments - Joint Venture Income		207,329	-
Surplus/(Deficit) for the Year from Continuing Operations		(57,552)	(229,475)
Surplus/ (Deficit) for the Year		(57,552)	(229,475)

STATEMENT OF CHANGES IN NET ASSETS

Tennis New Zealand Incorporated For the year ended 30 June 2023

	2023	2022
Members Equity		
Opening Balance	3,356,551	3,586,026
Accumulated comprehensive revenue and expense		
Surplus / (Deficit) for the Period	(57,552)	(229,475)
Total Accumulated comprehensive revenue and expense	(57,552)	(229,475)
Total Members Equity	3,298,998	3,356,551

STATEMENT OF FINANCIAL POSITION

Tennis New Zealand Incorporated As at 30 June 2023

	NOTES	30 JUN 2023	30 JUN 2022
Assets			
Current Assets			
Bank Accounts and Cash	4	249,560	1,253,476
Accounts Receivable	5	945,054	548,120
Prepayments		126,791	37,044
Investments	6	1,655,051	1,831,418
Total Current Assets		2,976,457	3,670,058
Non-Current Assets			
Capital Work in Progress	7	162,995	87,275
Equity Accounted Investees	8	508,990	-
Intangibles	9	-	5,178
Property, Plant and Equipment	10	154,129	142,655
Total Non-Current Assets		826,114	235,109
Total Assets		3,802,571	3,905,167
Liabilities			
Current Liabilities			
Bank Overdraft / Credit Cards	4	18,029	23,909
Creditors and Accrued Expenses	11	304,370	336,638
Employee Costs Payable	12	141,174	81,494
Income in Advance		40,000	106,574
Total Current Liabilities		503,572	548,616
Total Liabilities		503,572	548,616
Total Assets less Total Liabilities (Net Assets)		3,298,998	3,356,551
Accumulated Funds			
Accumulated surpluses or (deficits)	13	3,298,998	3,356,551
Total Accumulated Funds		3,298,998	3,356,551

STATEMENT OF CASH FLOWS

Tennis New Zealand Incorporated For the year ended 30 June 2023

	2023	2022
Movement in Cash		
Cash Flows from Operating Activities		
Grants and Sponsorship	915,529	819,238
TAB	1,448,918	1,286,146
Affiliation Fees	464,847	356,119
Tournaments and Events	1,168,140	821,477
Interest Income	26,765	23,648
ASB Classic Tournaments - Joint Venture Income	275,000	-
Payments to Suppliers and Employees	(4,759,812)	(3,581,824)
Total Cash Flows from Operating Activities	(460,613)	(275,196)
Cash Flows from Investing Activities		
Sale of Plant and Equipment & Intangibles	-	487
Purchase of Plant and Equipment & Intangibles	(129,799)	(194,757)
Term Deposits	176,367	1,009,720
ASB Classic - Joint Venture	(583,990)	-
Total Cash Flows from Investing Activities	(537,422)	815,450
Cash Flows from Financing Activities		
Repayment of Loans	-	110,000
Total Cash Flows from Financing Activities	-	110,000
Net increase/(decrease) in cash	(998,035)	650,254
	2023	2022
Cash Balances		
Cash and Cash Equivalent at the beginning of the period	1,229,566	579,312
Cash and Cash Equivalent at the end of the period	231,532	1,229,566
Net Change in Cash for the period	(998,035)	650,254

STATEMENT OF ACCOUNTING POLICIES

Tennis New Zealand Incorporated For the year ended 30 June 2023

1. Reporting Entity

The reporting entity is Tennis New Zealand Incorporated ("Tennis NZ"). Tennis New Zealand Incorporated is domiciled in New Zealand and is a charitable organisation registered under the Incorporated Societies Act 1908 and the Charities Act 2005.

The financial statements of Tennis NZ are presented for the year ended 30 June 2023. These financial statements and the accompanying notes summarise the financial results of activities carried out by Tennis NZ which provides tennis sporting services and facilities to people living in the wider New Zealand area.

These financial statements have been approved and were authorised for issue by the Board on the 11 October 2023.

2. Statement of Compliance

The financial statements have been prepared in accordance with Generally Accepted Accounting Practice in New Zealand ("NZ GAAP"). They comply with Public Benefit Entity International Public Sector Accounting Standards ("PBE IPSAS") and other applicable financial reporting standards as appropriate that have been authorised for use by the External Reporting Board for Not-For-Profit entities. For the purposes of complying with NZ GAAP, Tennis NZ is a public benefit not-for-profit entity and is eligible to apply PBE IPSAS RDR on the basis that it does not have public accountability and it is not defined as large. The Board has elected to report in accordance with PBE Accounting Standards RDR.

3. Significant Accounting Policies

The significant accounting policies used in the preparation of these financial statements as set out below have been applied consistently to both years presented in these financial statements.

3.1 Basis of Measurement

These financial statements have been prepared on the basis of historical cost, as modified by the fair value measurement of non-derivative financial instruments.

3.2 Functional and Presentational Currency

The financial statements are presented in New Zealand dollars (\$), which is Tennis NZ's functional currency. All financial information presented in New Zealand dollars has been rounded to the nearest dollar.

3.3 Revenue

Revenue is recognised to the extent that it is probable that the economic benefit will flow to Tennis NZ and revenue can be reliably measured. Revenue is measured at the fair value of the consideration received. The following specific recognition criteria must be met before revenue is recognised.

Revenue from non-exchange transactions

Donations

Donations are recognised as revenue upon receipt and include any donations from the general public, or donations received for specific programmes or services.

Grant Revenue

Grant revenue includes grants given by other charitable organisations, philanthropic organisations and businesses. Grant revenue is recognised when the conditions attached to the grant have been complied with. Where there are unfulfilled conditions attaching to the grant, the amount relating to the unfulfilled condition is recognised as a liability and released to revenue as the conditions are fulfilled.

TAB Revenue

The TAB revenue is from commission on tennis betting and is recognised as revenue when entitled to be received.

Revenue from Exchange Transactions

Affiliation Fees

Affiliation fees received are initially recorded as income in advance and recognised in revenue evenly over the membership period.

Where coaches purchase specific services (for example, attendance at coaching and development courses), revenue is initially recorded as income in advance, and then recognised proportionally on the basis of the value of each session relative to the total value of the purchased services.

Interest Revenue

Interest revenue is recognised as it accrues, using the effective interest method.

3.4 Financial Instruments

Financial assets and financial liabilities are recognised when Tennis NZ becomes a party to the contractual provisions of the financial instrument.

Tennis NZ derecognises a financial asset or, where applicable, a part of a financial asset or part of a group of similar financial assets when the rights to receive cash flows from the asset have expired or are waived, or Tennis NZ has transferred its rights to receive cash flows from the asset or has assumed an obligation to pay the received cash flows in full without material delay to a third party; and either:

- Tennis NZ has transferred substantially all the risks and rewards of the asset; or
- Tennis NZ has neither transferred nor retained substantially all the risks and rewards of the asset, but has transferred control of the asset.

Financial Assets

Financial assets within the scope of PBE IPSAS 29 Financial Instruments: Recognition and Measurement are classified as financial assets at fair value through surplus or deficit, loans and receivables, held-to-maturity investments or available-for-sale financial assets. The classifications of the financial assets are determined at initial recognition.

Loans and Receivables

Loans and receivables are non-derivative financial assets with fixed or determinable payments that are not quoted in an active market. After initial recognition, these are measured at amortised cost using the effective interest method, less any allowance for impairment. Tennis NZ's cash and cash equivalents, short-term investments, receivables from non-exchange transactions, receivables from exchange transactions and non-equity investments fall into this category of financial instruments.

Impairment of Financial Assets

A financial asset or a group of financial assets is impaired and impairment losses are incurred if there is objective evidence of impairment as a result of one or more events that occurred after the initial recognition of the asset (a 'loss event') and that loss event has an impact on the estimated future cash flows of the financial asset or the group of financial assets that can be reliably estimated.

For financial assets carried at amortised cost, if there is objective evidence that an impairment loss on loans and receivables carried at amortised cost has been incurred, the amount of the loss is measured as the difference between the asset's carrying amount and the present value of the estimated future cashflows discounted at the financial asset's original effective interest rate. The carrying amount of the asset is reduced through the use of an allowance account. The amount of the loss is recognised in the surplus or deficit for the reporting period.

If in a subsequent period, the amount of the impairment loss decreases and the decrease can be related objectively to an event occurring after the impairment was recognised, the previously recognised impairment loss is reversed by adjusting the allowance account. If the reversal results in the carrying amount exceeding its amortised cost, the amount of the reversal is recognised in surplus or deficit.

Financial Liabilities

Tennis NZ's financial liabilities include trade and other creditors (excluding GST and PAYE), employee entitlements and deferred income (in respect to grants whose conditions are yet to be complied with).

All financial liabilities are initially recognised at fair value (plus transaction cost for financial liabilities not at fair value through surplus or deficit) and are measured subsequently at amortised cost using the effective interest method.

3.5 Cash and Cash Equivalents

Cash and cash equivalents are short term, highly liquid investments that are readily convertible to known amounts of cash and which are subject to an insignificant risk of changes in value.

3.6 Property, Plant and Equipment

Items of property, plant and equipment are measured at cost less accumulated depreciation and impairment losses. Cost includes expenditure that is directly attributable to the acquisition of the asset.

Depreciation is charged on a straight-line basis over the useful life of the asset. Depreciation is charged at rates calculated to allocate the cost or valuation of the asset less any estimated residual value over its remaining useful life:

- Sporting equipment - 3 years
- Office furniture / equipment - 5 years
- Computer equipment / software - 3 years

Depreciation methods, useful lives and residual values are reviewed at each reporting date and are adjusted if there is a change in the expected pattern of consumption of the future economic benefits or service potential embodied in the asset.

3.7 Intangible Assets

Intangible assets acquired separately are measured on initial recognition at cost. The cost of intangible assets acquired in a non-exchange transaction is their fair value at the date of the exchange.

Following initial recognition, intangible assets are carried at cost less any accumulated amortisation and accumulated impairment losses.

The useful lives of intangible assets are assessed as either finite or indefinite. Intangible assets with finite lives are amortised over the useful economic life and assessed for impairment whenever there is an indication that the intangible asset may be impaired. A review is made at least at the end of each financial period.

The amortisation expense on intangible assets with finite lives is recognised in surplus or deficit as the expense category that is consistent with the function of the intangible assets. Tennis NZ does not hold any intangible assets that have an indefinite life.

3.8 Employee Benefits

Wages, Salaries and Annual Leave

Liabilities for wages, salaries and annual leave are recognised in surplus or deficit during the period in which the employee provided the related services. Liabilities for the associated benefits are measured at the amounts expected to be paid when the liabilities are settled.

3.9 Income Tax

Due to its charitable status, Tennis NZ is exempt from income tax.

3.10 Goods and Services Tax (GST)

Revenues, expenses and assets are recognised net of the amount of GST except for receivables and payables, which are stated with the amount of GST included.

The net amount of GST recoverable from, or payable to, the Inland Revenue Department is included as part of receivables or payables in the statement of financial position.

Cash flows are included in the statement of cash flows on a gross basis and the GST component of cash flows arising from investing and financing activities, which is recoverable from, or payable to, the Inland Revenue Department is classified as part of operating cash flows.

3.11 Equity

Equity is the members interest in Tennis NZ, measured as the difference between total assets and total liabilities. Equity is made up of the following component:

Accumulated comprehensive income and expenses. This is Tennis NZ's accumulated surplus or deficit since its formation, adjusted for transfers to/from specific reserves.

3.12 Financial Accounting Standards

There were no new PBE IPSAS RDR standards that became effective in the current year that have an impact upon the Tennis NZ financial accounts.

4. Significant Accounting Judgements, Estimates and Assumptions

The preparation of Tennis NZ's financial statements requires management to make judgements, estimates and assumptions that affect the reported amounts of revenues, expenses, assets and liabilities, and the accompanying disclosures, including the disclosure of contingent liabilities. Uncertainty about these assumptions and estimates could result in outcomes that require a material adjustment to the carrying amount of assets or liabilities affected in future periods.

Judgements

In the process of applying Tennis NZ's accounting policies, management has made the following judgements, which have the most significant effect on the amounts recognised in the financial statements.

Use of Going Concern

The view of the Directors, is that Tennis NZ have sufficient resources to enable it to meet its obligations as and when they fall due and therefore continue to adopt the use of the going concern assumption in the preparation of the financial statements.

Operating Lease Commitments

Leases in terms of which Tennis NZ does not retain all the significant risks and rewards of ownership, are accounted for as operating leases.

Operating lease rentals are recognised evenly over the expected period of the benefit to the organisation. In the event that lease incentives are received to enter into operating leases, such incentives are initially recorded as a liability and are recognised as a reduction of rental expense on a straight-line basis over the term of the lease.

Estimates and Assumptions

The key assumptions concerning the future and other key sources of estimation uncertainty at the reporting date, that have a significant risk of causing a material adjustment to the carrying amounts of assets and liabilities within the next financial year, are described below. Tennis NZ based its assumptions and estimates on parameters available when the financial statements were prepared. Existing circumstances and assumptions about future developments, however, may change due to market changes or circumstances arising beyond the control of Tennis NZ. Such changes are reflected in the assumptions when they occur.

Useful Lives and Residual Values

The useful lives and residual values of assets are assessed using the following indicators to determine potential future use and value from disposal:

The condition of the asset

- The nature of the asset, its susceptibility and adaptability to changes in technology and processes
- The nature of the processes in which the asset is deployed
- Availability of funding to replace the asset
- Changes in the market in relation to the asset.

The estimated useful lives of the asset classes held by Tennis NZ are listed in Note 3.6.

5. Joint Ventures

Tennis New Zealand is a party to a joint arrangement when there is a contractual arrangement that confers joint control over the relevant activities of the arrangement to the entity and at least one other party.

Tennis New Zealand classifies its interests in joint arrangements as either:

- Joint ventures: where the entity has rights to only the net assets of the joint arrangement
- Joint operations: where the entity has both the rights to assets and obligations for the liabilities of the joint arrangement.

In assessing the classification of interests in joint arrangements, Tennis New Zealand considers:

- The structure of the joint arrangement
- The legal form of joint arrangements structured through a separate vehicle.
- The contractual terms of the joint arrangement agreement
- Any other facts and circumstances (including any other contractual arrangements).

Tennis New Zealand accounts for its interests in joint ventures using the equity method.

Any premium paid for an investment in a joint venture above the fair value of the entities share of the identifiable assets, liabilities and contingent liabilities acquired is capitalised and included in the carrying amount of the investment in joint venture. Where there is objective evidence that the investment in a joint venture has been impaired the carrying amount of the investment is tested for impairment in the same way as other non-financial assets.

Tennis New Zealand accounts for its interests joint operations by recognising its share of assets, liabilities, revenues and expenses in accordance with its contractually conferred rights and obligations. In accordance with PBE IPSAS 37 Joint Arrangements, the entity is required to apply all of the principles of PBE IFRS 3 Business Combinations when it acquires an interest in a joint operation that constitutes a business as defined by PBE IFRS 3.

Judgement

For all joint arrangements structured in separate vehicles Tennis New Zealand must assess the substance of the joint arrangement in determining whether it is classified as a joint venture or joint operation. This assessment requires Tennis New Zealand to consider whether it has rights to the joint arrangement's net assets (in which case it is classified as a joint venture), or rights to and obligations for specific assets, liabilities, expenses, and revenues (in which case it is classified as a joint operation). Factors the group must consider include:

- Structure
- Legal form
- Contractual agreement
- Other facts and circumstances.

Upon consideration of these factors, Tennis New Zealand has determined that all of its joint arrangements structured through separate vehicles give it rights to the net assets and are therefore classified as joint ventures.

NOTES TO THE FINANCIAL STATEMENTS

Tennis New Zealand Incorporated For the year ended 30 June 2023

	2023	2022
1. Revenue from Non-Exchange Transactions		
International Tennis Federation Funding	196,971	271,290
Grants and Community Trusts	196,894	173,226
Other Income	36,428	10,235
Sport New Zealand	612,016	521,196
Totalisator Agency Board	1,954,132	1,444,619
Total Revenue from Non-Exchange Transactions	2,996,440	2,420,566
	2023	2022
2. Interest Received		
Bank and Deposits	61,919	26,066
Total Interest Received	61,919	26,066
	2023	2022
3. Analysis of Expenses		
Administration		
Audit Fees	19,272	16,917
Bad Debts	-	622
Board Expenses	51,126	7,175
CEOG / Chairs Meeting Costs	17,357	3,838
Consultancy Fees	48,349	103,400
Communication	23,618	17,243
Delegates Expense	33,194	9,892
Depreciation	47,782	30,157
General Expenses	62,160	25,166
Grants	-	50,000
Insurances & Workplace Cover	22,682	18,238
ITF and OTF Subscriptions and Meetings	63,789	52,852
Office Equipment <\$1000	5,710	1,506
Office Rental / Operation	75,075	47,064
Personnel	675,814	602,976
Printing & Stationery	5,890	4,657
Legal and Accounting Fees	111,417	160,105
Strength & Adapt Expense	32,956	2,625
Total Administration	1,296,192	1,154,433
Coaching		
Coach Education	246,900	169,028
Total Coaching	246,900	169,028

	2023	2022
Davis Cup / Billie Jean King Cup		
Billie Jean King Cup	8,669	97,177
Davis Cup	455,317	417,321
Total Davis Cup / Billie Jean King Cup	463,986	514,498
Events - National and Other		
General Expenses	27,043	4,957
National Events	450,966	60,192
Personnel	86,024	93,848
Total Events - National and Other	564,033	158,997
High Performance		
Development Camps/ Talent ID	24,077	-
General Expenses	24,340	15,040
Overseas Tours	412,808	118,586
Personnel	451,736	346,265
Player Support and Targeted Junior Athletes	330,007	321,788
Sports Science	51,998	24,473
Total High Performance	1,294,966	826,152
Marketing and Communication		
Book a Court	77,630	82,516
General Expenses	14,240	280
Personnel	-	281
Publicity and Promotion	164,355	158,485
Website, IT Support and Licenses	229,736	281,095
Total Marketing and Communication	485,961	522,657
Participation		
Affiliate Support	39,503	18,685
Hot Shots Resources and Equipment	5,413	4,764
Hot Shots, Tennis Express and Cardio Tennis	34,126	20,566
General Expenses	38,812	28,125
Personnel	265,884	300,121
Total Participation	383,737	372,262
Total Analysis of Expenses	4,735,776	3,718,025

	2023	2022
4. Cash and Cash Equivalents		
Cash at Bank		
ASB Cheque Account	922	5,793
ASB Business Saver	4	509,883
BNZ Cheque Account	221,488	355,436
BNZ Autocall	33	344,712
NAB Australia	23,483	14,733
Tennis New Zealand - PayPal	3,630	22,918
Total Cash at Bank	249,560	1,253,476
Bank Overdraft		
BNZ Credit Cards	(18,029)	(23,909)
Total Bank Overdraft	(18,029)	(23,909)
Total Cash and Cash Equivalents	231,532	1,229,566
	2023	2022
5. Trade and Other Receivables		
Trade Debtors	40,461	419,942
Accrued Income	890,421	7,278
Sundry Debtors & Accruals	14,173	120,900
Total Trade and Other Receivables	945,054	548,120
	2023	2022
6. Investments		
Term Deposits maturing within 12 months of balance date	1,655,051	1,831,418
Total Investments	1,655,051	1,831,418
	2023	2022
7. Capital Work in Progress		
Customer Relationship Management Software	162,995	87,275
Total Capital Work in Progress	162,995	87,275

8. Joint Ventures

(a) Joint Ventures

Tennis New Zealand holds joint control over the following joint venture, which is accounted for using equity method.

	2023
ASB Classic Tournaments	50%

ASB Classic is a joint venture and is domiciled in New Zealand.

The aggregate amount of cash flows from these joint ventures is presented below:

	2023	2022
ASB Classic Tournaments		
Operating Activities - Surplus	207,329	-
Investing Activities - Outflow	508,991	-

(b) Group's exposure to contingencies and commitments from its interests in joint ventures

- There were no contingent liabilities relating to interests in joint ventures.
- There were no contingent assets relating to interests in joint ventures.
- There were no capital or other commitments relating to interests in joint ventures.

	2023	2022
9. Intangibles		
Intangible Assets	161,617	161,617
Intangible Assets - Amortised Costs	(161,617)	(156,439)
Total Intangibles	-	5,178

	2023	2022
10. Property, Plant and Equipment		
Computers S/W Website	9,402	4,138
Furniture & Fixtures	131,768	527
Office Equipment	8,459	6,979
Tennis Equipment	4,500	5,389
Capital Work in Progress	-	125,622
Total Property, Plant and Equipment	154,129	142,655

Reconciliation of the carrying amount at the beginning and end of period:

	Computer Equipment	Furniture and Fittings	Office Equipment	Sporting Equipment	Capital Work in Progress	Total
2023						
Opening Balance	4,138	527	6,979	5,389	125,622	142,655
Additions	11,588	157,467	6,146	4,500	(125,622)	53,079
Depreciation	(6,324)	(26,226)	(4,666)	(5,389)	-	(42,605)
New book value	9,402	131,769	8,459	4,500	-	154,130
2022						
Opening Balance	10,016	1,187	2,968	16,193	-	30,364
Additions	-	-	6,957	-	125,622	132,578
Disposal	-	-	(487)	-	-	(487)
Depreciation	(5,878)	(660)	(2,459)	(10,804)	-	(19,801)
New book value	4,138	527	6,979	5,389	125,622	142,655

	2023	2022
11. Creditors and Accrued Expenses		
Trade Creditors	262,823	184,082
GST	20,658	79,348
Sundry Creditors	20,889	73,208
Total Creditors and Accrued Expenses	304,370	336,638

	2023	2022
12. Employee Costs Payable		
Provision for Holiday Pay	91,381	81,494
Wages Payable	49,792	-
Total Employee Costs Payable	141,174	81,494

	2023	2022
13. Accumulated Funds		
Accumulated Funds		
Opening Balance	3,356,551	3,586,026
Accumulated surpluses or (deficits)	(57,552)	(229,475)
Total Accumulated Funds	3,298,998	3,356,551

14. Key Management Personnel

The key management personnel, as defined by PBE IPSAS 20 Related Party Disclosures, are the members of the governing body which is comprised of the Board, Chief Executive Officer and Senior Management which constitutes the governing body of Tennis New Zealand Incorporated. No remuneration is paid to members of the Board. The aggregate remuneration of key management personnel and the number of individuals, determined on a full-time equivalent basis, receiving remuneration is as follows:

	2023	2022
Key Management Remuneration		
Total Remuneration	577,741	500,994
Number of Persons	4	3

15. Leases

As at the reporting date, the Board had entered into the following non-cancellable operating leases:

	2023	2022
Operating Leases		
Not later than one year - Office premises	55,000	54,996
Not later than one year - Motor vehicles	53,675	5,646
Later than one year and no later than five years - Office premises	220,000	-
Later than one year and no later than five years - Motor vehicle	30,759	-
Total Operating Leases	359,434	60,642

Tennis New Zealand has entered into a 5 plus 5 year contract lease with Tennis Northern for the new premises on Albany Tennis Park, with the option to renew at the end of the period.

16. Capital Commitments

There were no capital commitments at the reporting date (Last year - nil).

17. Contingent assets and liabilities

There were no contingent assets or liabilities at the reporting date (Last year - nil).

18. Trust grants and sponsorship

A number of expense items have been fully, substantially or partially funded by Sport New Zealand, trust grants or commercial sponsorship.

19. Events After the Balance Date

There were no events that have occurred after balance date that would have a material impact on the Financial Statements.

TENNIS NEW ZEALAND

Albany Tennis Park

321 Oteha Valley Road, Albany

Auckland 0632

www.tennis.kiwi